

APPLICATION MANUAL



Applications for M3 Mobile Devices

Version : 1.1.1

Release Date : 12 July, 2013

www.m3mobile.net

APPLICATION MANUAL

Flash Disk Version Information



Table of Contents

VERSION INFORMATION	3
CHAPTER 1. STARTUP(WM) GUIDE	4
1.1 StartUp.inf.....	4
1.2 M3.ini.....	5
1.3 VisualINI	14
CHAPTER 2. SCANNER	21
2.1 ScanEmul.exe.....	21
CHAPTER 3. IMAGER	31
3.1 ImagerEmul.exe	31
CHAPTER 4. LONG -RANGE SCANNER.....	44
4.1 LRScanEmul.exe	44
CHAPTER 5. CAMERA(WM).....	55
5.1 Camera.exe	55
CHAPTER 6. RFID.....	57
6.1 RFIDEmul.exe.....	57
6.2 Helpful Tips	62
CHAPTER 7. GPS	63
7.1 GPSManager.exe	63
7.2 Helpful Tips	65
CHAPTER 8. APPCENTER (WM)	66
12.1 AppCenter.exe.....	66

APPLICATION MANUAL

Flash Disk Version Information



VERSION INFORMATION

Ver 1.1.1 (20130712)

MODULE	PROGRAM	VERSION	DATE
StartUp	M3INIT.exe(CE)	Ver 1.4.0	2012-05-04
	McStart.exe(WM)	Ver 1.7.2	2013-05-16
	VisualINI.CAB(WM)	Ver 1.7.1	2013-03-13
SCANNER (Software Decoder)	ScanEmul.exe	Ver 1.3.3	2013-06-27
	Scanner.dll	Ver 1.1.3	2013-05-30
IMAGER	ImagerEmul.exe	Ver 1.3.0	2013-03-14
	Imager.dll	Ver 1.0.3	2013-03-14
Long-Range Scanner	LRScanEmul.exe	Ver 1.0.0	2012-01-13
	LRScanner.dll	Ver 1.0.0	2012-01-13
CAMERA	Camera.exe	Ver 1.1.2	2013-05-13
	CAM.dll	Ver 1.1.1	2013-04-26
RFID	RfidEmul.exe	Ver 2.1.1	2012-04-29
	CFReader.dll	Ver 4.1.5.9	
GPS	GPSManager.exe	Ver 1.1.0	2012-05-31
	GPS.dll	Ver 1.0.0	2012-01-13
AppCenter	M3AppCenterCe.exe	Ver 1.1.0	2012-01-13
	M3AppCenterWm.exe	Ver 1.3.1	2013-04-12

CHAPTER 1. STARTUP(WM) GUIDE

Product	Type	OS	Note
M3 SKY	StartUp	WM 6.1/6.5	
MM3	StartUp	WM 6.1	
M3 ORANGE	StartUp	WM 6.5	
M3 SMART	StartUp	WM 6.5	Applied after 1.6.0
M3 ORANGE+/S	StartUp	WM 6.5	

1.1 StartUp.inf

In StartUp.inf, user can write commands to copy, move, delete, rename files, create folder or shortcut, and modify registry values. Moreover, DLL register, unregister and auto run of an executable file is also possible.

Here is an example of CopyFile.

```
CopyFile=/H "\\Flash Disk\Scanner\KScanBar.dll" "\\Pages\KScanBar_TEST.dll"
```

This command will copy KScanBar.dll which is located in \ Flash Disk \ Scanner folder to \ Pages folder and rename it to **KScanBar_TEST.dll** after hard reset (/H command, /S is used for soft reset).

Note

Above example will not execute successfully if the file does not exist in original folder.

For all commands (copy, delete, etc.), user can select when to execute the command; after hard reset or soft reset. In addition, for copy and move commands, user can rename the file as show in the above example.

Command structure and example is described below:

```
// CopyFile=[execute type] [path to original file] [path to copy]
Eg: Example shown above.
// MoveFile=[execute type] [path to original file] [path to move]
Eg: MoveFile=/s "\\My Documents\a.cab" "\\Flash Disk\a.cab"
//DeleteFile=[execute type] [path to the file to delete]
Eg: DeleteFile=/H "\\Flash Disk\a.lnk"
//CreateFolder=[execute type] [path to the folder to create]
Eg: CreateFolder=/h "\\My Documents\hardreset"
//ShortCut=[execute type] [path to original file] [path to the quick link]
Eg: ShortCut=/s "\\Flash Disk\a.exe" "\\My Documents\a.lnk"
//RegSetValue=[execute type] [data type (string, dword, etc)] [[path] : value]
Eg: RegSetValue=/s string [HKEY_CURRENT_USER\MCSSetting\Scanner]test : "test"
Eg: RegSetValue=/s dword [HKEY_CURRENT_USER\MCSSetting\Scanner]intTest : 68
```

APPLICATION MANUAL

1.2 M3.ini

If you open **M3.ini** file in PC, you will see the following lines at the top of the page. These lines show compatible devices and version information.

NOTE

M3.ini cannot be edited in PDA without special application.
It must be copied to PC, edited in PC then copied back to PDA.

```
// M3SKY / MM3 / M3ORANGE / M3SMART / M3ORANGEPLUS  
// Ver 1.7.2 Build:2013.05.16 Copyright 2011 M3Mobile, All Right reserved.
```

If not commented separately, '0' represents disable and '1' represents enable.

```
[SCANNER]  
AutoON=0  
ExeFile=\Flash Disk\Scanner\ScanEmul.exe
```

Setting AutoOn value to '1' will start **ScanEmul** automatically after soft/hard reset.

```
[RFID]  
AutoON=0  
ExeFile=\Flash Disk\RF_ID\RfidEmul.exe
```

Setting AutoOn value to '1' will start **RfidEmul** automatically after soft/hard reset.

```
[APPCENTER]  
AutoON=0  
ExeFile=\Flash Disk\AppCenter\M3AppCenterWm.exe
```

Setting AutoOn value to '1' will start **AppCenterWm** automatically after soft/hard reset.

```
// Reg Domain - NO CHANGE:0, FCC:1, ETSI:2, TELEC:3, WW:4, KCC:5  
// If the domain set using this function when clean-boot process, the device  
needs a reset.  
[WLAN]  
AutoON=0  
Domain=0
```

Setting AutoOn value to '1' will start **WLAN** automatically after soft/hard reset. WLAN regulatory domain: FCC (Americas), ETSI (Europe), TELEC (Japan), WW (Worldwide), KCC (Korea), can be set in M3.ini.

```
[BLUETOOTH]           [PHONE]  
AutoON=0              AutoON=0
```

Setting AutoOn value to '1' will start **Bluetooth** and **phone** automatically after hard/soft reset.

APPLICATION MANUAL

```
// Scanner - 0:opticon scanner, 1:symbol scanner, 2: intermec scanner,  
//          3: hhp scanner, 4: codecorp scanner, 5: EX25 Scanner  
[DEVICE_TYPE]  
Scanner=0
```

After M3.ini version 1.6.0, it is not required to declare device model. But, scanner type still must be declared.

```
[REGIONAL]  
Install=0  
PrimaryLanguage=12  
SubLanguage=1
```

Users can select primary and sub languages. To make the changed applied, must set install value to '1' and reset the device. Refer to below table for primary and sub languages.

[PrimaryLanguage]

54:Afrikaans	28:Albanian	1:Arabic	43:Armenian
77:Assamese	44:Azeri	45:Basque	35:Belaruslan
69:Bengali	2:Bulgarian	3:Catalan	4:Chinese
26:Croatian	5:Czech	6:Danish	101:Divehi
19:Dutch	9:English	39:Estonian	56:Faeroese
41:Farsi	11:Finnish	12:Frence	55:Georgian
7:German	8:Greek	71:Gujarati	13:Hebrew
57:Hindi	14:Hungarian	15:Icelandic	33:Indonesian
16:Italian	17:Japanese	77:Kannada	96:Kashmiri
63:Kazak	87:Konkani	18:Korean	38:Latvian
39:Lithuanian	47:Macedonian	62:Malay	76:Malayalam
88:Manipuri	78:Marathi	80:Mongolian	97:Nepali
20:Norwegian	72:Oriya	21:Ploish	22:Portuguese
70:Punjabi	24:Romanian	25:Russian	79:Sanskrit
26:Serbian	89:Sindhi	27:Slovak	36:Slovenian
10:Spanish	65:Swahili	29:Swedish	90:Syriac
73:Tamil	68:Tatar	74:Telugu	30:Thai
31:Turkish	34:Ukrainian	32:Urdu	67:Uzbek
42:Vietnamese			

[Sub-Language]

Arabic	1:Arabic(Saudi Arabia), 2:Arabic(Iraq), 3:Arabic(Egypt), 4:Arabic(Libya), 5:Arabic(Algeria), 6:Arabic(Morocco), 7:Arabic(Tunisia), 8:Arabic(Oman), 9:Arabic(Yemen), 10:Arabic(Syria), 11:Arabic(Jordan), 12:Arabic(Lebanon), 13:Arabic(Kuwait), 14:Arabic(U.A.E), 15:Arabic(Bahrain), 16:Arabic(Qatar)
Azeri	1:Azeri(Latin), 2:Azeri(Cyrillic)
Chinese	1:Chinese(Taiwan), 2:Chinese(PR China), 3:Chinese(Hong Kong S.A.R., P.R.C.), 4:Chinese(Singapore), 5:Chinese(Macau S.A.R.)
Dutch	1:Dutch, 2:Dutch(Belgian)
English	1:English(USA), 2:English(UK), 3:English(Australian), 4:English(Canadian), 5:English(New Zealand), 6:English(Irish),

APPLICATION MANUAL

	7:English(South Africa), 8:English(Jamaica), 9:English(Caribbean), 10:English(Belize), 11:English(Trinidad), 12:English(Zimbabwe), 13:English(Philippines)
French	1:French, 2:French(Belgian), 3:French(Canadian), 4:French(Swiss), 5:French(Luxembourg), 6:French(Monaco)
German	1:German, 2:German(Swiss), 3:German(Austrian), 4:German(Luxembourg), 5:German(Liechtenstein)
Italian	1:Italian, 2:Italian(Swiss)
Kashmiri	2:Kashmiri(India)
Korean	1:Korean(Extended Wansung)
Lithuanian	1:Lithuanian, 2:Lithuanian(Classic)
Malay	1:Malay(Malaysia), 2:Malay(Brunei Darussalam)
Nepali	1:Nepali(India)
Norwegian	1:Norwegian(Bokmal), 2:Norwegian(Nynorsk)
Portuguese	1:Portuguese(Brazilian), 2:Portuguese
Serbian	1:Serbian(Latin), 2:Serbian(Cyrillic)
Spanish	1:Spanish(Castilian), 2:Spanish(Mexican), 3:Spanish(Modern), 4:Spanish(Guatemala), 5:Spanish(Costa Rica), 6:Spanish(Panama), 7:Spanish(Dominican Republic), 8:Spanish(Venezuela), 9:Spanish(Colombia), 10:Spanish(Peru), 11:Spanish(Argentina), 12:Spanish(Ecuador), 13:Spanish(Chile), 14:Spanish(Uruguay), 15:Spanish(Paraguay), 16:Spanish(Bolivia), 17:Spanish(El Salvador), 18:Spanish(Honduras), 19:Spanish(Nicaragua), 20:Spanish(Puerto Rico)
Swedish	1:Swedish, 2:Swedish(Finland)
Urdu	1:Urdu(Pakistan), 2:Urdu(India)
Uzbek	1:Uzbek(Latin), 2:Uzbek(Cyrillic)

For WM Devices key customization can also be done in **M3.ini**. To make the changes are affected, must set the install value to '1' and reset the device. Make sure you change the right entry and install value of the other device is '0'. For example, changing MM3 values will not work on the other devices.

[M3SKY_SIDE_KEY]	[MM3_SIDE_KEY]	[M3ORANGE_SIDE_KEY]
Install=0	Install=0	Install=0
LEFTDOWN=0	LEFTSOFT=1	LEFTUP=0
LEFTUP=0	RIGHTSOFT=1	LEFTDOWN=0
RIGHTDOWN=0	SEND=1	RIGHTDOWN=0
RIGHTUP=0	END =1	RIGHTUP =0
Blue=0	GREEN=1	SEND=0
Yellow=0	YELLOW=1	SOFT1=0
SOFT1=0	BACKSPACE=1	SCAN=0
SOFT2=0	TAB=1	SOFT2=0
	ESC=1	END=0
	SHIFT=1	ACTION=0
	SCAN=0	LEFT=0
	EnableFKey=0	UP=0
		DOWN=0
		RIGHT=0

APPLICATION MANUAL

[M3SMART_SIDE_KEY]	LeftKey=0
Install=0	UpKey=0
OnlySendEndFunc=1	RightKey=0
VolumeUpKey=0	DownKey=0
VolumeDownKey=0	WindowKey=0
RightDownKey=7	OKKey=0
SideUpKey=3	ShiftKey=0
SendKey=0	LockKey=0
Soft1Key=0	F1Key=0
ScanKey=0	F2Key=0
Soft2Key=0	F3Key=0
EndKey=0	F4Key=0
TabKey=0	F5Key=0
SpaceKey=0	F6Key=0
BkspKey=0	F7Key=0
EnterKey=0	F8Key=0
	F9Key=0
	F10Key=0

Below are the examples of key setting value of WM devices, if you enter key setting value of device you wish to use, the value will be applied from after reset device.

SKY Key Functions (MC-7101)	0=Default 1=VK_ESCAPE 2=VK_F13 3=VK_F14 4=VK_F17 5=VK_F18 6=VK_SPACE 7=VK_RETURN 8=SIP ON/OFF 9=excute application1 10=excute application2 11=Winodws Key 12=Home 13=PgUp 14=End 15=PgDn 16=None 17=VK_ACTION
MM3 Key Functions	0=None 1=Default 2=SIP ON/OFF 3=VK_APP1 4=VK_APP2 5=VK_RETURN 6=VK_CONTROL 7=VK_SHIFT 8=VK_ESCAPE 9=Launch Program1 10=Launch Program2 11=Launch Program3 12=Launch Program4 13=VK_M3SCAN 14=VK_ACTION
M3ORANGE Key Functions	0=Default 1=VK_ESCAPE 2=VK_F13 3=VK_F14 4=VK_F17 5=VK_F18 6=VK_SPACE 7=VK_RETURN 8=SIP ON/OFF 9=excute application1 10=excute application2 f11=Winodws Key 12=Home 13=PgUp 14=End 15=PgDn 16=None 17=.(PERIOD) 18=,(COMMA)
M3SMART Key Functions	0=Default 1=VK_ESCAPE 2=VK_F13 3=VK_F14 4=VK_F17 5=VK_F18 6=VK_SPACE 7=VK_RETURN 8=SIP ON/OFF 9=excute application1 10=excute application2 11=Winodws Key 12=Home 13=PgUp 14=End 15=PgDn 16=VK_ACTION 17=None

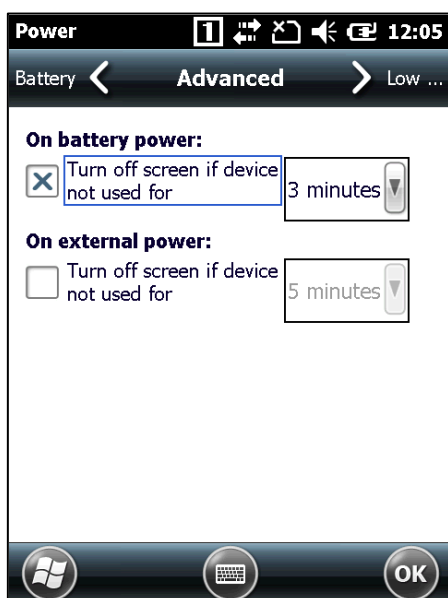
More details on key customization are available on [Support webpage](#).

APPLICATION MANUAL

```
// PowerTimeout - 0:UnInstall 1:Install
// Timeout - 0:Default=2min 1:1min 2:2min 3:3min 4:4min 5:5min
// ATimeout - 0:Default=5min 1:1min 2:2min 3:5min 4:10min 5:15min 6:30min
// CheckTimeout, CheckACTimeOu - 0:Uncheck 1:Check
[POWER_TIMEOUT]
Install=0
ACInstall=0
CheckTimeout=0
CheckACTimeOut=0
Timeout=0
ACTimeOut=0
```

Power_Timeout configures the power options which is also available in

[Start] → [Settings] → [Power] → [Advanced]



CheckTimeout=1 checks the checkbox of 'On battery power' and Timeout sets the time

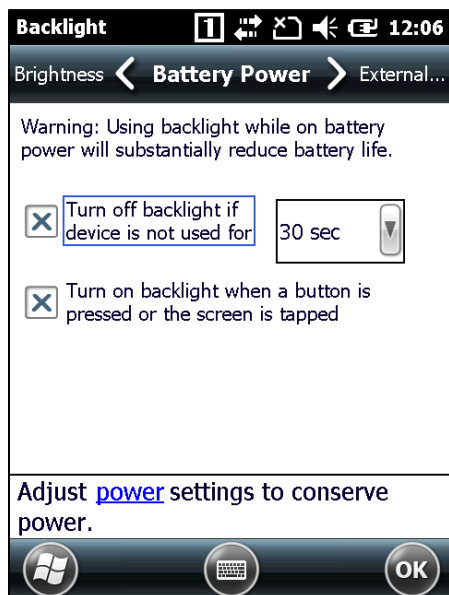
CheckACTimeOut=1 checks the checkbox of 'On external power' and ATimeout sets the time

To use these options, make sure that the install value of corresponding item is '1'

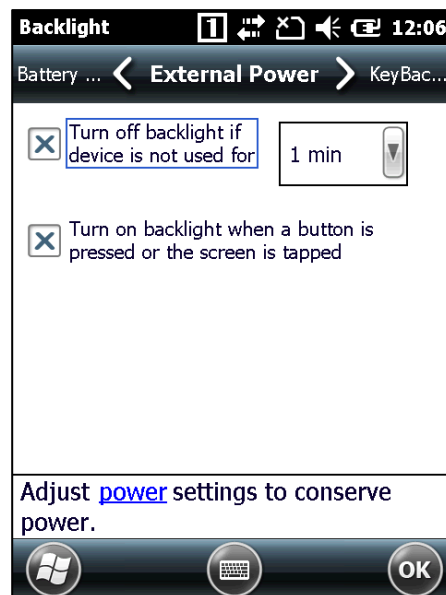
```
// BackLightTimeout - 0:UnInstall 1:Install
// Timeout - 0:Default=30sec 1:10sec 2:30sec 3:1min 4:2min 5:3min 6:4min 7:5min
// ATimeout - 0:Default=1min 1:1min 2:2min 3:3min 4:4min 5:5min 6:6min 7:7min
8:8min 9:9min 10:10min
[BACKLIGHT_TIMEOUT]
Install=0
ACInstall=0
CheckTimeout=0
CheckACTimeOut=0
Timeout=0
ACTimeOut=0
```

BACKLIGHT_TIMEOUT configures the backlight options which is also available in [Start] → [Settings] → [System] → [Backlight]

APPLICATION MANUAL



CheckTimeOut= 1 checks the checkbox of 'Turn off backlight...' and **TimeOut** sets the time.



CheckACTimeOut=1 checks the checkbox of 'Turn off backlight...' in 'External Power' tab and **ACTimeOut** sets the time.

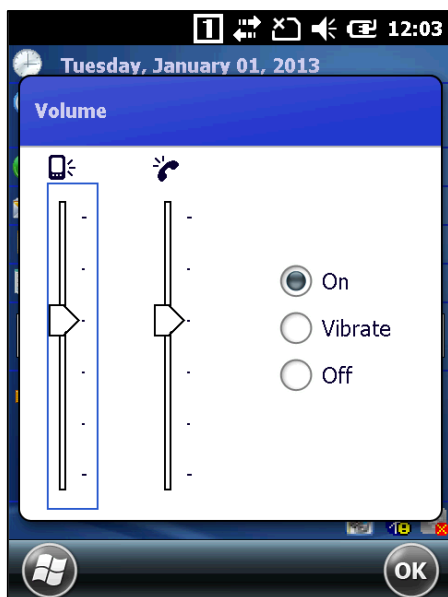
To use these options, make sure that the install value of corresponding item is '1'

```
// BackLight          - 0:UnInstall 1:Install
// Level : 0          - 9
[BACKLIGHT_LEVEL]
Install=0
Level=4
```

BACKLIGHT_LEVEL controls the brightness of the backlight which is also available in **[Start] → [Settings] → [System] → [Backlight] → [Brightness]**

```
// Volume             - 0:UnInstall 1:Install
// Mute               - 0:UnInstall 1:Install
// Volume / PhoneVolume - 0: 0x00000000 1:0x33333333 2:0x66666666 3:0x99999999
4:0xCCCCCCCC 5:0xFFFFFFFF
[VOLUME]
Install=0
PhoneInstall=0
Volume=3
PhoneVolume=3
Mute=0
```

APPLICATION MANUAL



Volume control option is available in 6 levels as shown in the picture

Volume refers to the device sound (left)

Phone Volume refers to the phone speaker volume (right)

Mute will mute the both device volume and speaker volume (same function as off button at the bottom)

The following options are used to run XML files in startup. File names are fixed to **Network.xml**, **GPRS.xml** and **ProxyServer.xml** for network, GPRS and proxy server respectively. With this option, XML files will automatically setup the connection.

[SET_NETWORK]

Install=0

[SET_GPRS]

Install=0

[SET_PROXYSERVER]

Install=0

[IE]

Install=0

StartPage=<http://www.google.com/pda>

This option sets the internet homepage.

[CAB_INSTALL]

Install=0

InstallFile=`\Flash Disk\Driver\Test.CAB`

User can add CAB file installation in startup after hard/soft reset. If you wish to auto install more than one CAB file, you can add in the same format; for example, **[CAB_INSTALL_2]** and **[CAB_INSTALL_3]**. It supports up to 100 CAB files for auto installation at the startup. However, you need to consider the flash disk size.

[GPRS_INSTALL]

Install=1

InstallFile=`\Flash Disk\Driver\WWAN_Manager.CAB`

Install WWAN Manager automatically after hard/soft reset.

[CF_INSTALL]

Install=0

InstallFile=`\Flash Disk\Driver\NETCFv35.wm.armv4i.cab`

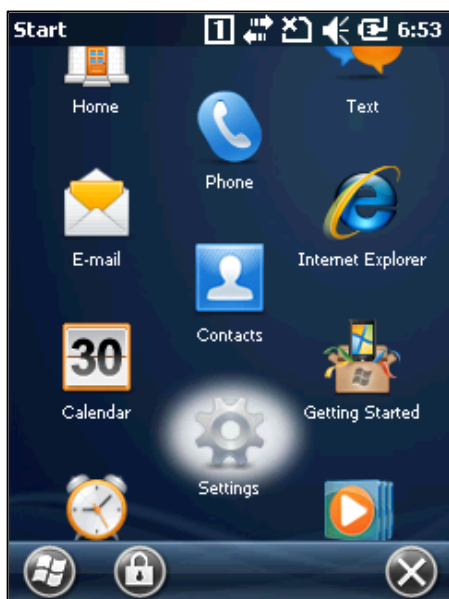
APPLICATION MANUAL

Set the install value to '1' if you wish to install .NET Compact Framework ver. 3.5 automatically after hard/soft reset. NETCF ver. 2.0 is pre-installed on the device.

[VISUALINI_INSTALL]

```
Install=1
InstallFile=\\Flash Disk\\Driver\\VisualINI.CAB
```

Installation options for **VisualINI**. **VisualINI** provides the same controllability as the **M3.ini** but all options can be configured on the device rather than opening with Notepad. You will see 'StartUp' icon in [Settings]→[System] as shown in the below picture if **VisualINI** is installed.



There are 13 tabs available in **VisualINI** (StartUp); StartUp tab to DLL tab. More detail on **VisualINI** is available on [Support webpage](#).

[REBOOT]

```
Install=0
```

This option controls auto reset when **McStart.exe** is run.

[INI_LOCK]

```
Install=0
Password=M3Mobile
```

This option assigns password for **VisualINI**.

[SET_TIME]

```
Install=0
SoftReset=0
GPS=1
GPSTimeOut=600
NTP=1
TimeServer=time.bora.net
```

APPLICATION MANUAL



TimeOut=1200

This is part for time setting for device via GPS or Network Time Protocol. You can choose to use or not to via install setting. Softreset setting is part to decide if time is needed to set whenever device is reset.

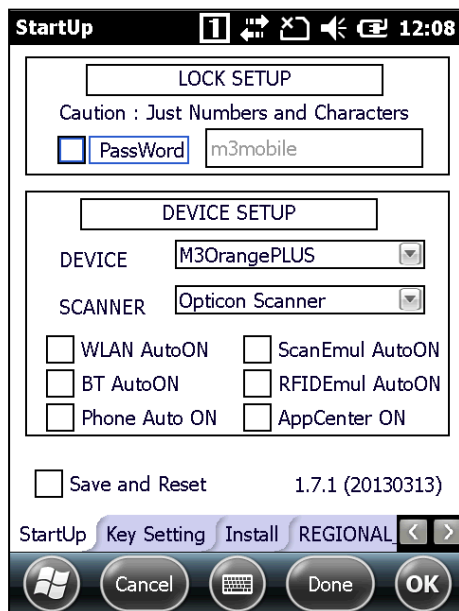
GPS setting is to decide if user wishes to set time via GPS, GPS TimeOut is standby time from GPS use until time set, which will be set by seconds.

NTP gathers defined time data from server by TimerServer. Timeout defines standby time when brings in time data from NTP Server via network.

APPLICATION MANUAL

1.3 VisualINI

1. StartUp Page



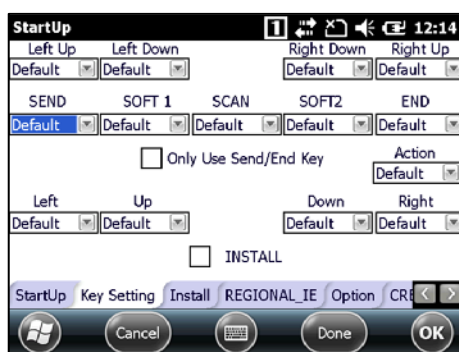
- **LOCK SETUP:** If Password clicks, password input page will be showed up every time when program starts

- User can set whether to use password
- Case-sensitive, non-usable special character
- Password can be used with alphabet and numbers only.
- **Initial PassWord:** m3mobile

- **DEVICE SETUP**

- **DEVICE:** Device model setting
- **SCANNER:** Device engine type setting
- **WLAN ON:** Runs **WLAN** automatically when booting.
- **BT ON:** Runs **Bluetooth** automatically when booting.
- **Phone ON:** Runs **Phone** automatically when booting.
- **ScanEmul ON:** Runs **ScanEmul** automatically when booting.
- **RFIDEmul ON:** Runs **RFIDEmul** automatically when booting.
- **AppCenter On:** Runs **AppCenter** Automatically when booting
- **Save and Reset:** Reboots after the Startup setting.

2. SideKey Page



- **SIDEKEY SETUP Page**

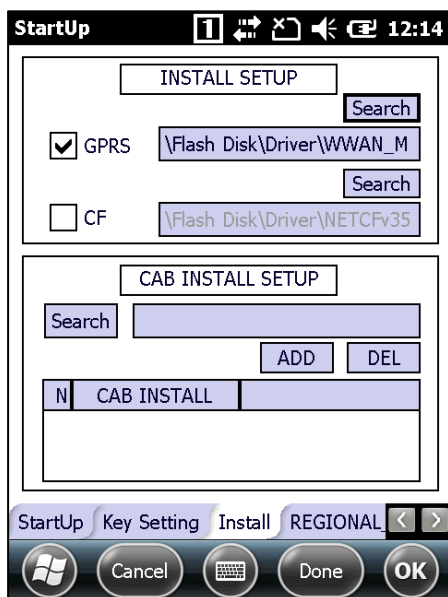
- **Key type**

- **M3SKY:** Default / VK_ESCAPE / VK_F13 / VK_F14 / VK_F16 / VK_F17 / SIP on/off / VK_RETURN
- **MM3:** None / Default / SIP ON/OFF / VK_APP1 / VK_APP2 / VK_RETURN / VK_CONTROL / VK_SHIFT / VK_ESCAPE / Launch Program1 / Launch Program2 / Launch Program3
- **M3SMART:** Default / VK_ESCAPE / VK_F13 / VK_F14 / VK_F17 / VK_F18 / VK_SPACE / VK_RETURN / SIP ON/OFF / excute application1 / excute application2 / Winodws Key / Home / PgUp / End / PgDn / VK_ACTION / None
- **M3Orange:** Default / VK_ESCAPE / VK_F13 / VK_F14 / VK_F16 / VK_F17 / VK_SPACE / SIP on/off / Application 1/ Application 2/ Windows / Home / PgUp / End / PgDn / Done / VK_ACTION / .(PERIOD) / ,(COMMA)

- **Install:** Sets up the user-defined SideKey when booting

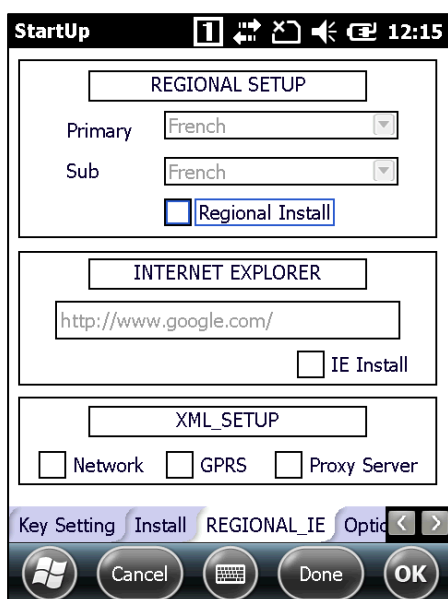
APPLICATION MANUAL

3. Install Page



- CAB file setup Page
- INSTALL SETUP
 - GPRS: WWAN_Manager installation setting
 - CF: .Net CF3.5 installation setting
- CAB INSTALL SETUP
 - Set up the CAB file what user wants to install
 - Search: Searches file within folder
 - ADD: Adds the selected file to a list box
 - DEL: Deletes the selected file in a list box

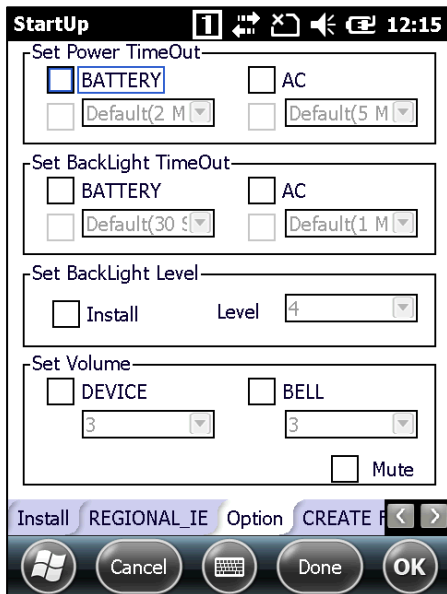
4. Regional_SetUp Page



- Local language and Internet / XML setup Page
- REGIONAL SETUP
 - Primary: Major language setup
 - Sub: Subsidiary language setup
 - Regional Install: whether to apply user defined
- INTERNET EXPLORER
 - Internet start page setup
 - IE Install: Applies user defined Startup page
- XML_SETUP
 - The file name is fixed as **Network.XML/GPRS.XML/ProxyServer.XML**
 - Check the file what user wants to install

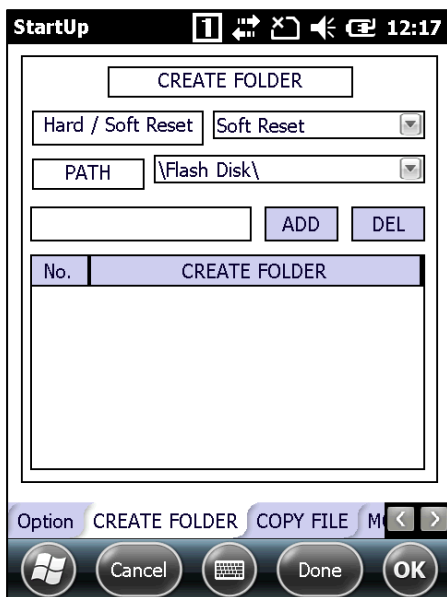
APPLICATION MANUAL

5. Option Page



- **Power / Backlight / Volume setup Page**
- **Power TimeOut**
 - **BATTERY:** Set up the power timeout in using battery
 - **AC:** Set up the power timeout in using AC power
- **BackLight TimeOut**
 - **BATTERY:** Set up the light timeout in using battery
 - **AC:** Set up the light timeout in using AC power
- **BackLight Level:** Set up the backlight level when booting
- **Volume**
 - **DEVICE:** Set up the main volume when booting
 - **BELL:** Set up the call volume when booting
 - **Mute:** Set up the mute when booting

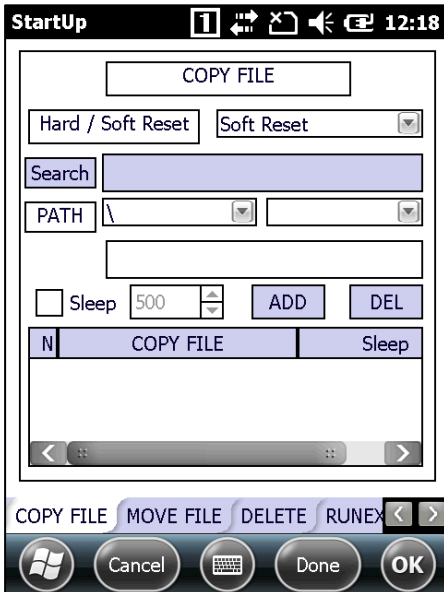
6. Create Folder Page



- **Setup the Create Folder when booting**
- **Hard / Soft Reset:** Set up hard reset / soft reset
- **PATH:** Set up the folder path
- **ADD:** Add folder to a list box
- **DEL:** Delete folder in a list box

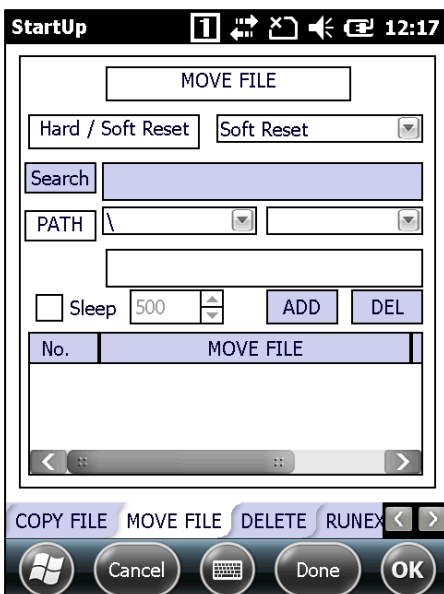
APPLICATION MANUAL

7. CopyFile Page



- **Setup the Copy file when booting**
- **Hard / Soft Reset:** Set up hard reset / soft reset
- **Search:** Search files to copy
- **PATH:** Set up the file path to be copied
- **Sleep:** Set up sleep time after copy
- **ADD:** Add **Copyfile** to a list box
- **DEL:** Delete **Copyfile** in a list box

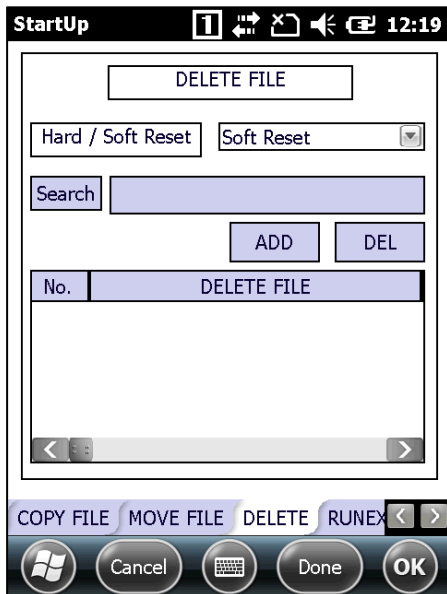
8. MoveFile Page



- **Setup the Move file when booting**
- **Hard / Soft Reset:** Setup hard reset / soft reset
- **Search:** Search file to move
- **PATH:** Set up the file path to be moved
- **Sleep:** Set up sleep time after move
- **ADD:** Add **Movefile** to a list box
- **DEL:** Delete **Movefile** in a list box

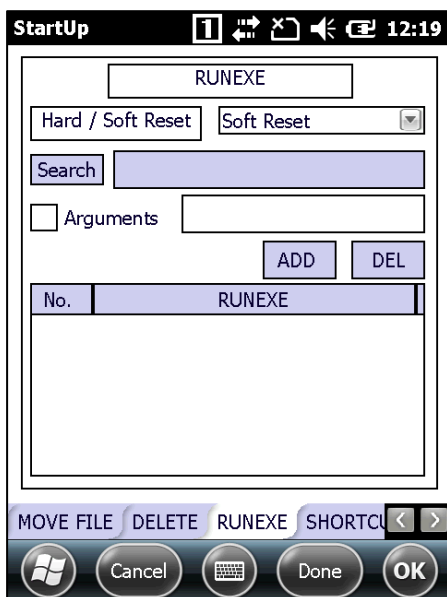
APPLICATION MANUAL

9. DeleteFile page



- **Setup the Delete file when booting**
- **Hard / Soft Reset:** Setup hard reset / soft reset
- **Search:** Search file to delete
- **ADD:** Add **Deletefile** to a list box
- **DEL:** Delete **Deletefile** in a list box

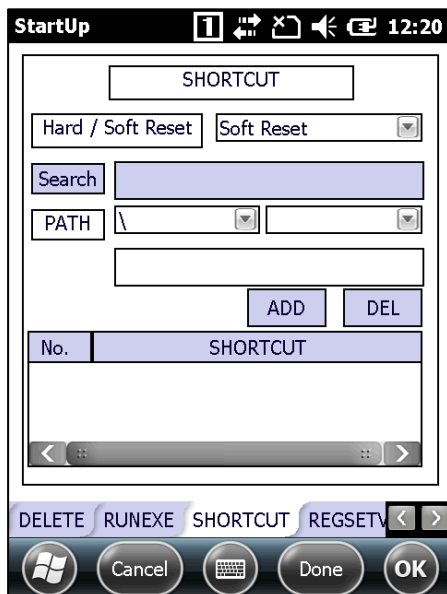
10. RunExe Page



- **Setup the RunExe when booting**
- **Hard / Soft Reset:** Setup hard reset / soft reset
- **Search:** Search file to auto-run
- **Arguments:** Setup auto-run file parameter
- **ADD:** Add **RunExe** to a list box
- **DEL:** Delete **RunExe** in a list box

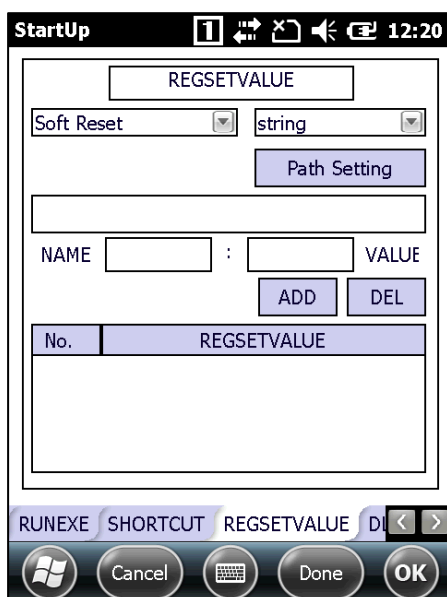
APPLICATION MANUAL

11. Shortcut Page



- Setup the **ShortCut** when booting
- **Hard / Soft Reset**: Setup hard reset / soft reset
- **Search**: Search file to create the shortcut
- **PATH**: Setup the path to create the shortcut
- **ADD**: Add **ShorCut** to a list box
- **DEL**: Delete **ShortCut** in a list box

12. Regsetvalue Page



- Setup the **Registry** value when booting
- **Hard / Soft Reset**: Setup hard reset / soft reset
- **Path Setting**: Set up the registry path
- **NAME**: Input the registry name
- **VALUE**: Input the registry value
- **ADD**: Add **RegSetValue** to a list box
- **DEL**: Delete **RegSetValue** in a list box

APPLICATION MANUAL

13. DllRegisterServer Page



- **Setup the DLLREGISTERSERVER when booting**
- **Hard / Soft Reset:** Setup hard reset / soft reset
- **Search:** Search **dll** files to register to server
- **ADD:** Add **DllRegisterServer** to a list box
- **DEL:** Delete **DllRegisterServer** in a list box

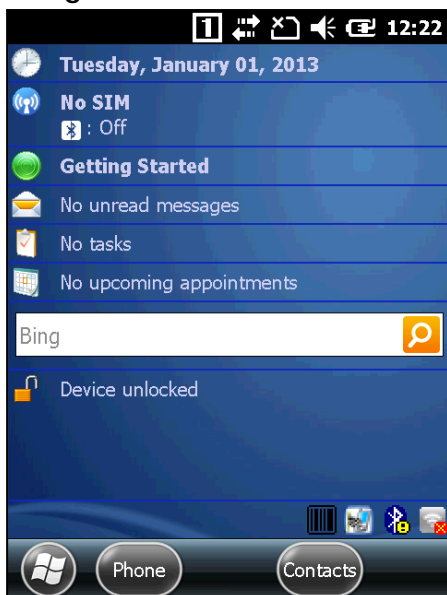
APPLICATION MANUAL

CHAPTER 2. SCANNER

Product	Model	Type	OS	Note
M3 GREEN	MC-6XX0S	S/W & H/W Decoder	CE 5.0	
M3 SKY	MC-7XX0S	S/W & H/W Decoder	WM 6.1/6.5	
M3 POS	MC-8800S	S/W Decoder	CE 5.0	
M3 T	MC-6700S/H	S/W Decoder	CE 5.0	
MM3	MC-8000S	S/W Decoder	WM 6.1	
M3 SAMRT	M3 SMART	S/W & H/W Decoder	CE 6.0/WM 6.5	
M3 ORANGE	M3 ORANGE	S/W & H/W Decoder	WM 6.5	
M3 ORANGE+/S	M3 ORANGE+/S	S/W & H/W Decoder	WM 6.5	

2.1 ScanEmul.exe

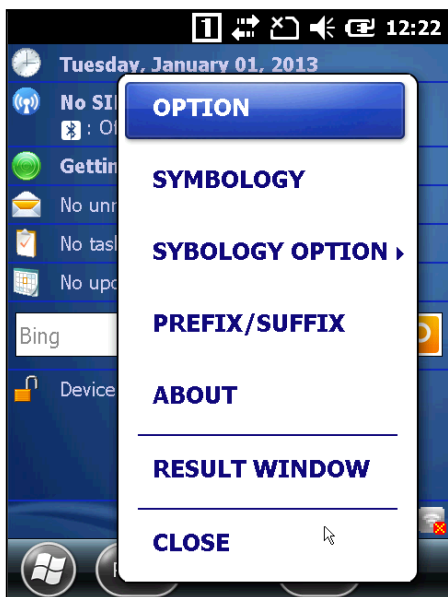
1. Main Page



- **ScanEmul** is properly launched if you can see **ScanEmul** tray icon at the bottom

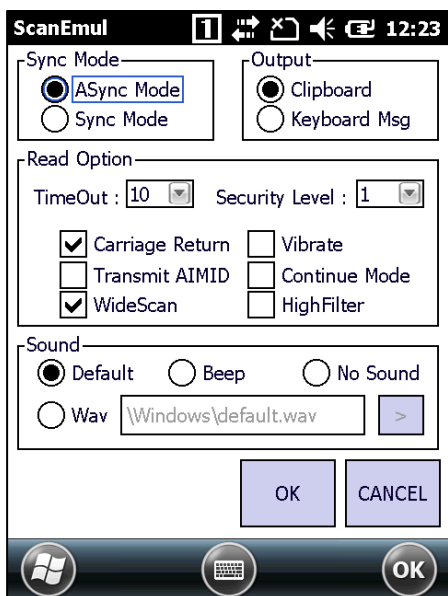
2. Pop-up menu appears when you click the icon

APPLICATION MANUAL



- **Option:** Configures general Emulator options
- **Symbology:** Configures options Regarding Symbology Option
- **Symbology Option:** Configures options Regarding Detail Symbology Option
- **Prefix / Suffix:** Enter data or command at the front or end of barcode data
- **About:** Information of **ScanEmul**
- **Result Window:** Tests reading of barcodes
- **Close:** Close the program

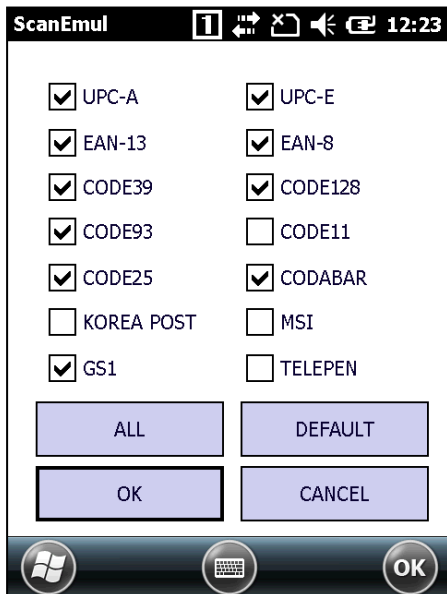
3. Option



- **SyncMode**
 - **ASync:** Emits beam while the scan button is pressed, limited by the TimeOut
 - **Sync:** Emits beam for TimeOut period
- **Output**
 - **Clipboard:** Outputs the result to clipboard
 - **keyboard Msg:** Outputs the result one by one as typing on keyboard
- **Reading Option**
 - **Time Out:** Beam emitting duration
 - **Carriage Return:** Send **VK_RETURN** message which indicates 'Enter key' after scanning
 - **Vibrate:** Vibrate after a successful scan. Only valid for terminals with phone module in M3 SKY
 - **Transmit AIMID:** Output AIM ID of the barcode at the front of the data
 - **Continue Mode:** Emits beam constantly even after reading
- **Sound**
 - **Default:** default sound after a successful scan
 - **Beep:** Beeps after a successful scan
 - **No Sound:** No sound after a successful scan
 - **Wav:** User defined wav sound

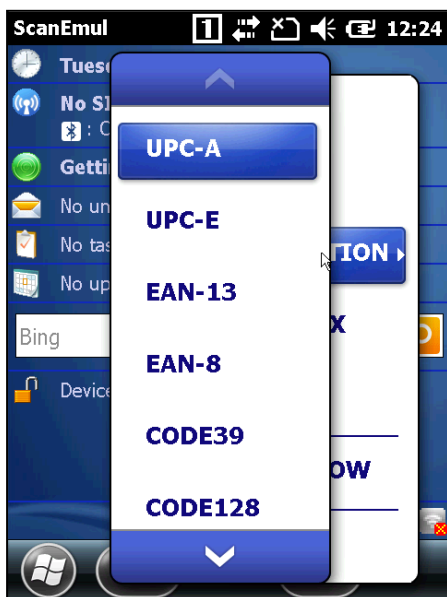
APPLICATION MANUAL

4. Symbology



- Enable or disable 14 different types of barcode
- **ALL**: Select all barcode type
- **Default**: Select the default information of barcode type
- **OK** : The selected barcode types Apply to ScanEmul
- **CANCEL** : cancel the PopUp Menu to select barcode type

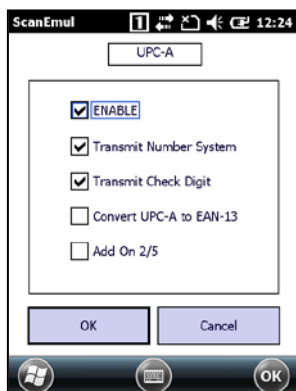
5. Symbology Option



- Advanced configuration for each barcode
- Enter advanced settings for each barcode type by click on them

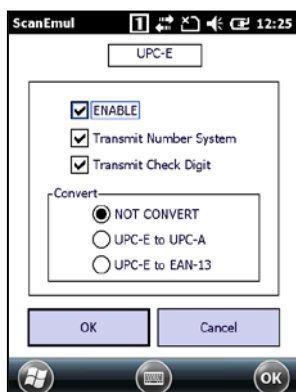
APPLICATION MANUAL

< UPC-A >



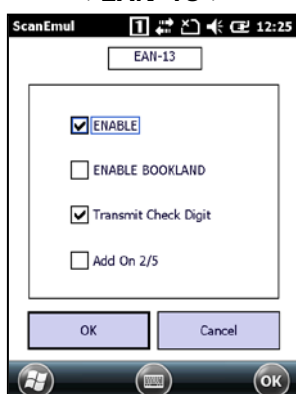
- **ENABLE:** Enable barcode decoding
- **Transmit Number System:** Front most number output option
- **Transmit Check Digit:** Add Check Digit to the output data
- **Convert UPC-A as EAN-13:** Converts **UPC-A** to **EAN13** by adding '0' at the front
- **Add On 2/5:** Option to read two consecutive barcodes when **UPC-A** types have neighboring additional barcodes (2 and 5 spaces)

< UPC-E >



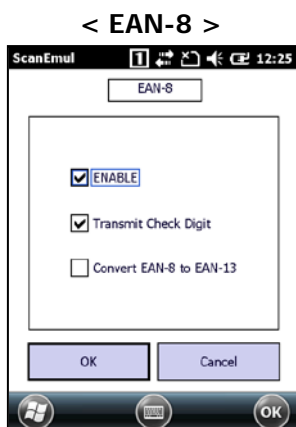
- **ENABLE:** Enable barcode decoding
- **Transmit Number System:** Front most number output option
- **Transmit Check Digit:** Add Check Digit to the output data
- **Convert option**
 - **NOT CONVERT:** Does not convert barcodes
 - **UPC-E as UPC-A:** Convert to **UPC-A** by inserting '0' in the data
 - **UPC-E as EAN-13:** Convert to **EAN-13** by adding '0' at the front and in the middle of data

< EAN-13 >

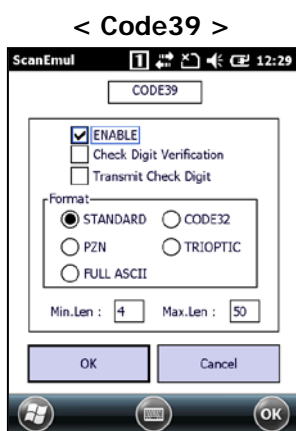


- **ENABLE:** Enable barcode decoding
- **ENABLE BOOKLAND:** Enable **BOOKLAND_EAN** barcodes. When unchecked, it will read **BOOKLAND_EAN** type as simple **EAN-13**
- **Transmit Check Digit:** Add Check Digit to the output data
- **Add On 2/5:** Option to read two consecutive barcodes when **EAN-13** types have neighboring additional barcodes (2 and 5 spaces)

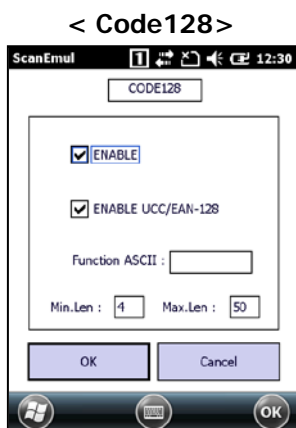
APPLICATION MANUAL



- **ENABLE:** Enable barcode decoding
- **Transmit Check Digit:** Add Check Digit to the output data
- **Convert EAN-8 as EAN-13:** convert to **EAN-13** by adding five zeros at the front of the data



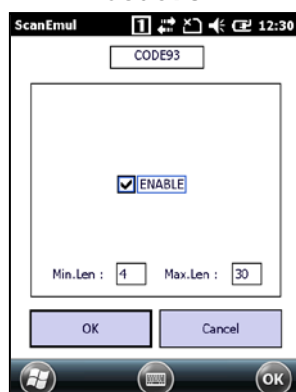
- **ENABLE:** Enable barcode decoding
- **Check Digit Verification:** Only decodes the barcode with check digit
- **Transmit Check Digit:** Add Check Digit to the output data
- **Format**
 - **STANDARD:** Set Code39 standard format
 - **ENABLE CODE32:** Enable **CODE32** barcodes. When selected, it will read **CODE32** type as simple **CODE39**
 - **ENABLE PZN:** Enable **PZN** barcodes. When unchecked, it will read **PZN** type as simple **CODE39**
 - **ENABLE TRIOPTIC:** Enable **TRIOPTIC** barcodes. When unchecked, it will read **TRIOPTIC** type as simple **CODE39**
 - **Full ASCII Conversion:** Outputs the letters when letters are included in the data
- **Min / Max Length:** Minimum and maximum length of the readable data



- **ENABLE:** Enable barcode decoding
- **ENABLE UCC/EAN-128:** Enable **UCC/EAN-128** barcodes. When checked, it will read **UCC/EAN-128** type as simple **CODE39**
- **Function ASCII:** Allows the user to insert data for supported types of **CODE128** barcodes
- **Min / Max Length:** Minimum and maximum length of the readable data

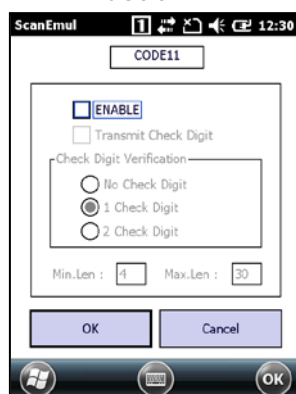
APPLICATION MANUAL

< Code93 >



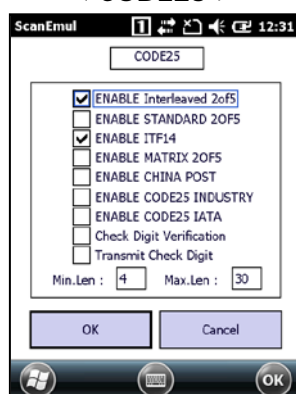
- **ENABLE:** Enable barcode decoding
- **Min / Max Length:** Minimum and maximum length of the readable data

< Code11 >



- **ENABLE:** Enable barcode decoding
- **Transmit Check Digit:** Add Check Digit to the output data
- **Check Digit Verification:** Only decodes the barcode with check digit(s)
- **Min / Max Length:** Minimum and maximum length of the readable data

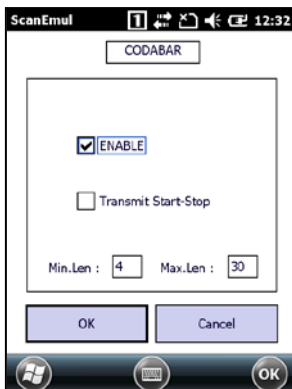
< CODE25 >



- **ENABLE Interleaved 2of5:** Enable **Interleaved 2of5** barcodes
- **ENABLE STANDARD 2of5:** Enable **STANDARD 2of5** barcodes
- **ENABLE ITF14:** Enable **ITF14** barcodes
- **ENABLE MATRIX 2OF5:** Enable **MATRIX 2OF5** barcodes
- **ENABLE CHINA POST:** Enable **CHINA POST** barcodes
- **ENABLE CODE25 INDUSTRY:** Enable **INDUSTRY** barcodes
- **ENABLE CODE25 IATA:** Enable **IATA** barcodes
- **Check Digit Verification:** Only decodes the barcode with check digit
- **Transmit Check Digit:** Check digit output option
- **Min / Max Length:** Minimum and maximum length of the readable data

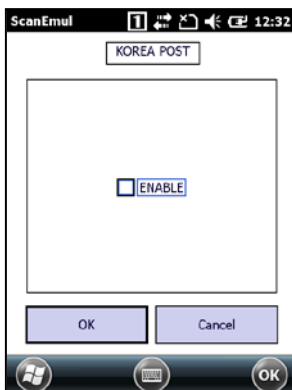
APPLICATION MANUAL

< CODABAR >



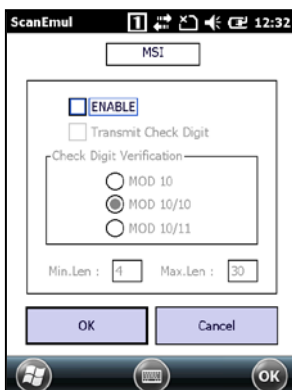
- **ENABLE:** Enable barcode decoding
- **Transmit Start-Stop:** Outputs start-stop bit of **Codabar** type barcodes
- **Min / Max Length:** Minimum and maximum length of the readable data

< KOREA POST >



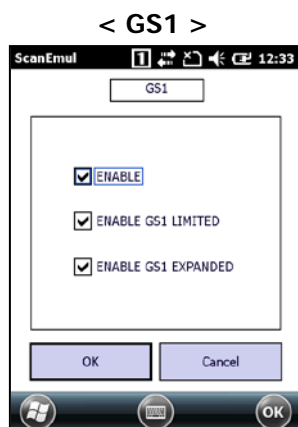
- **ENABLE:** Enable barcode decoding

< MSI >

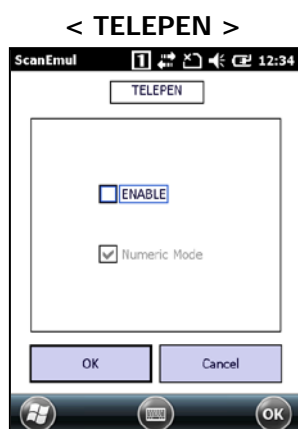


- **ENABLE:** Enable barcode decoding
- **Transmit Check Digit:** Add Check Digit to the output data
- **Check Digit Verification**
 - **MOD 10:** Inspect Check Digit of barcode by using MOD 10 mode
 - **MOD 10/10:** Inspect Check Digit of barcode by using MOD 10/10 mode
 - **MOD 10/11:** Inspect Check Digit of barcode by using MOD 10/11 mode
- **Min / Max Length:** Minimum and maximum length of the readable data

APPLICATION MANUAL



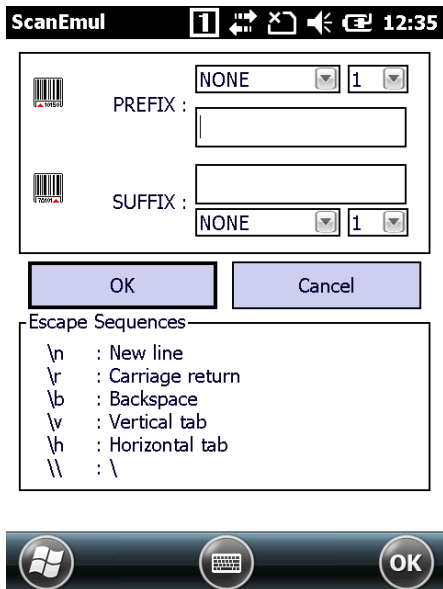
- **ENABLE:** Enable barcode decoding
- **ENABLE GS1 LIMITED:** Enable GS1 Limited Type of barcode decoding
- **ENABLE GS1 EXPANDED:** Enable GS1 Expanded Type of barcode decoding



- **ENABLE:** Enable barcode decoding
- **Numeric Mode:** Enable **Numeric Mode** barcode decoding. Numeric Mode converts character set to Numeric set by Numeric Mode rule

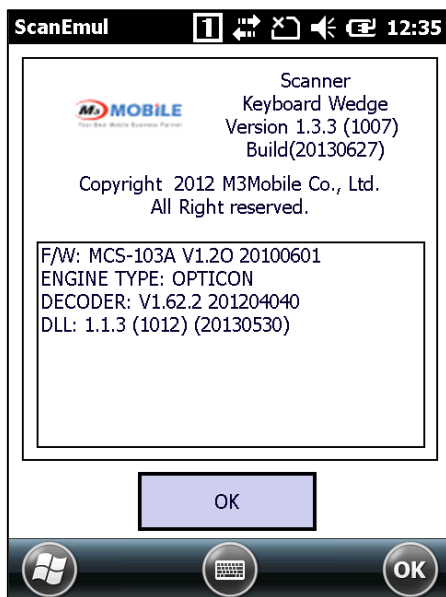
APPLICATION MANUAL

6. Prefix / Suffix



- **Prefix:** Enter data or command at the front of barcode data
 - **Virtual Key / Ctrl + A~Z**
 - **Count** (number of prefix input)
- **Suffix:** Enter data or command at the end of barcode data
 - **Virtual Key / Ctrl + A~Z**
 - **Count** (number of suffix input)
- Escape Sequences are also available for prefix and suffix. But those are only available in Keyboard output mode.

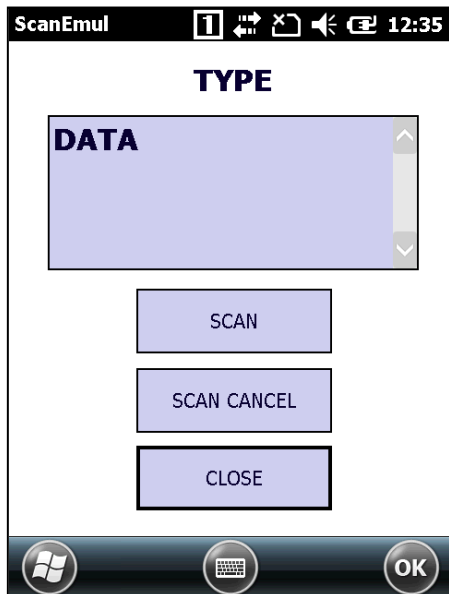
7. About



- **Shows versions of those listed below.**
 - **F/W:** Displays scanner Firmware information
 - **ENGINE:** Displays scanner engine type
 - **DECODER:** Displays scanner decoder version
 - **DLL:** Display scanner dynamic linking library version

APPLICATION MANUAL

8. Result Window



- On Result window, barcode data and symbology can be checked easily.
- **Scan:** Start scanning
- **Scan Cancel:** Stop scanning
- **Close:** Close the Display
- **TYPE:** Display symbology of barcode after scanning
- **DATA:** Display data of barcode after scanning

APPLICATION MANUAL

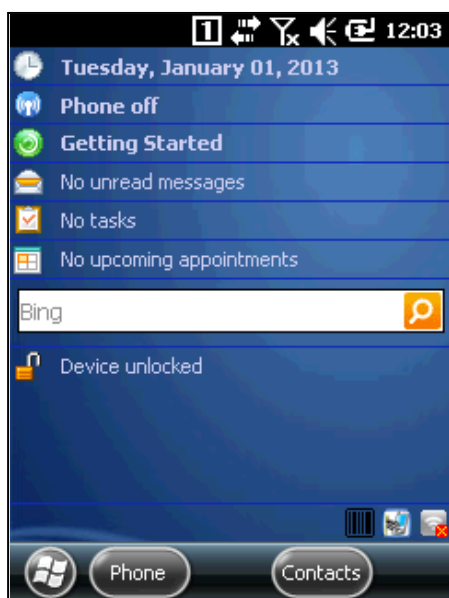


CHAPTER 3. IMAGER

Product	Model	Type	OS	Note
M3 GREEN	MC-61X0S	S/W Decoder	CE 5.0	
M3 SKY	MC-77X0S	S/W Decoder	WM 6.1/6.5	
M3 POS	MC-8800S	S/W Decoder	CE 5.0	
M3 T	MC-6700S/H	S/W Decoder	CE 5.0	
MM3	MC-8000S	S/W Decoder	WM 6.1	
M3 SAMRT	M3 Smart	S/W Decoder	WM 6.5	
M3 ORANGE	M3 Orange	S/W Decoder	WM 6.5	
M3 ORANGEPLUS	M3 OrangePlus	S/W Decoder	WM 6.5	

3.1 ImagerEmul.exe

1. First view of the program



- **ImagerEmul** tray icon will appear if **ImagerEmul** is launched.

2. Pop-up menu appears when you click the icon

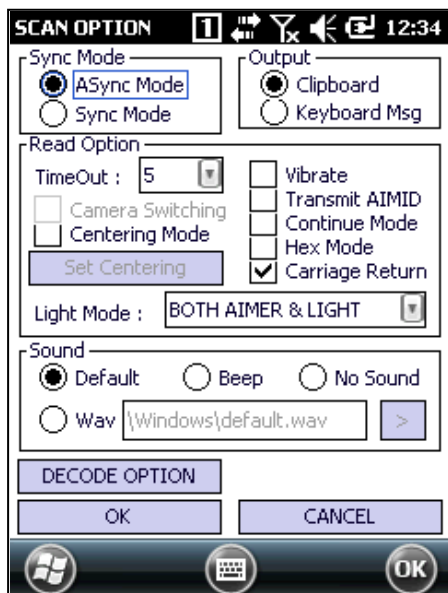


- **Option:** Configures general Emulator options
- **Symbology:** Configures options Regarding Symbology Option
- **Prefix / Suffix:** Enter data or command at the front or end of barcode data
- **Imager Camera:** The camera using imager module
- **IQ Imager:** IntelliImage
- **About:** Information of **ScanEmul**
- **Result Window:** Tests reading of barcodes
- **Close:** Close the program

APPLICATION MANUAL



3. Option



• SyncMode

- **ASync:** Emits beam while the scan button is pressed, limited by the TimeOut
- **Sync:** Emits beam for TimeOut period

• Output

- **Clipboard:** Outputs the result to clipboard
- **keyboard Msg:** Outputs the result one by one as typing on keyboard

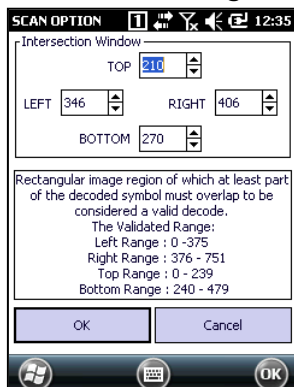
• Reading Option

- **Time Out:** Beam emitting duration
- **Camera Switching:** Enable Camera Switching switch between imager and camera
- **Centering Mode:** Enable decodes Centering Mode. In this mode, a decode call is only successful if the area bounding the decoded symbol intersects a caller-defined rectangle located about the center of the captured image.
- **Vibrate:** Vibrate after a successful scan. Only valid for terminals with phone module
- **Transmit AIMID:** Output AIM ID of the barcode
- **Continue Mode:** Emits beam constantly even after reading
- **Hex Mode:** Display the barcode data as a Hex value
- **Carriage Return:** Send **VK_RETURN** message which indicates 'Enter key' after scanning
- **Light Mode**
 - ◆ **NO Light:** Neither aimers or illumination used during scanning
 - ◆ **Aimer Only:** Aimer only used during scanning
 - ◆ **Light Only:** Illumination LEDs only used during scanning
 - ◆ **Both Aimer & Light:** Alternating aimer and illumination during scanning

• Sound

- **Default:** default sound after a successful scan
- **Beep:** Beeps after a successful scan
- **No Sound:** No sound after a successful scan
- **Wav:** User defined wav sound

< Set Centering >



Intersection Window

TOP: 210

LEFT: 346 RIGHT: 406

BOTTOM: 270

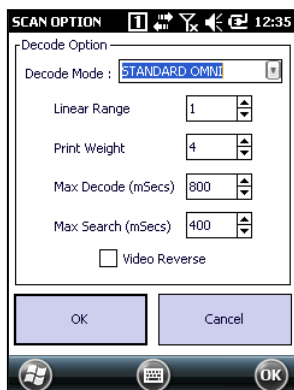
Rectangular image region of which at least part of the decoded symbol must overlap to be considered a valid decode.
The Validated Range:
Left Range : 0 - 375
Right Range : 376 - 751
Top Range : 0 - 239
Bottom Range : 240 - 479

OK Cancel

● Intersection Window

- **Top** : Input range is 0 - 239
- **Left**: Input range is 0 - 375
- **Right**: Input range is 376 - 751
- **Bottom**: Input range is 240 - 479

< Decoder Option >



Decode Option

Decode Mode : STANDARD OMNI

Linear Range: 1

Print Weight: 4

Max Decode (mSecs): 800

Max Search (mSecs): 400

☐ Video Reverse

OK Cancel

● Decode Mode

- **Standard OMNI**: Enable **Standard OMNI** decode mode
- **QUICK OMNI (2D)**: Enable **QUICK OMNI (2D)** decode mode
- **AGRESSIVE LINEAR(1D)**: Enable **AGRESSIVE LINEAR(1D)** decode mode

● Linear Range: Valid range is 1-6

● Print Weight: Valid range is 1-7

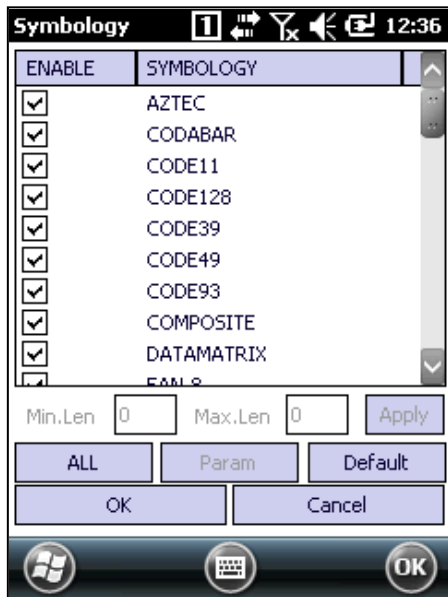
● Max Decoder(mSec): Valid range 1-10,000, '0' is disable

● Max Search(mSec): Valid range 1-10,000, '0' is disable

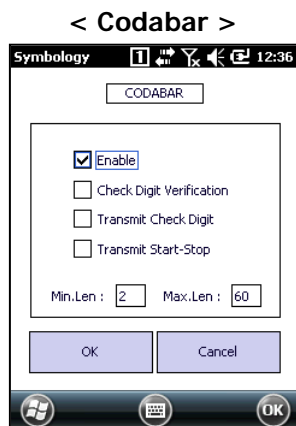
● Video Reverse: Enable video reverse

APPLICATION MANUAL

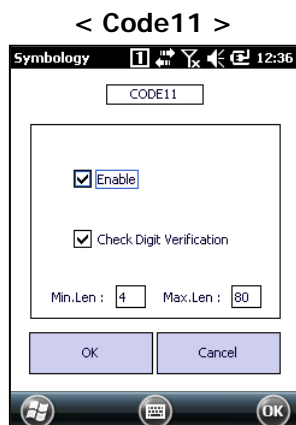
4. Symbology



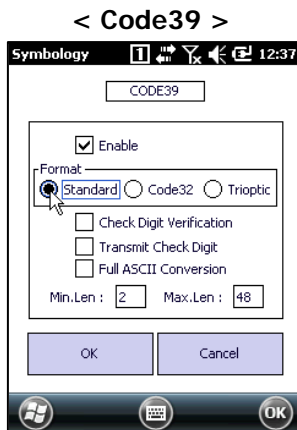
- **Advanced configuration for each barcode**
- **Enable or disable 47 different types of barcode**
- Enter advanced settings for each barcode type by click on them
- **Min / Max Length:** Set Min/Max length value on type of barcode
- **ALL:** Select all barcode type
- **Param :** Set the detail information of barcode
- **Default:** Select the default information of barcode type



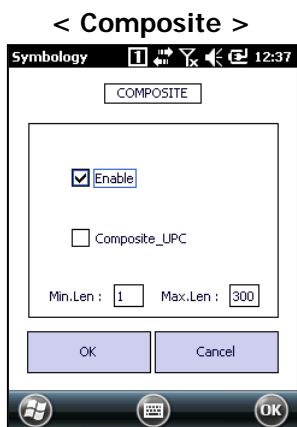
- **ENABLE:** Enable barcode decoding
- **Check Digit Verification:** Only decodes the barcode with check digit
- **Transmit Check Digit:** Check digit output option -> Transmit Check Digit into the Screen
- **Transmit Start-Stop:** Outputs start-stop bit of **Codabar** type barcodes



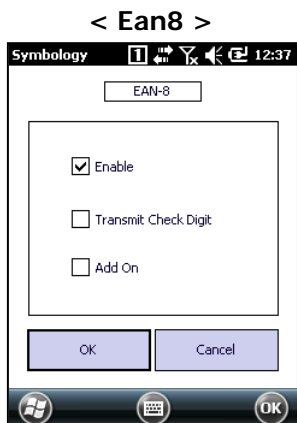
- **ENABLE:** Enable barcode decoding
- **Check Digit Verification:** Only decodes the barcode with check digit



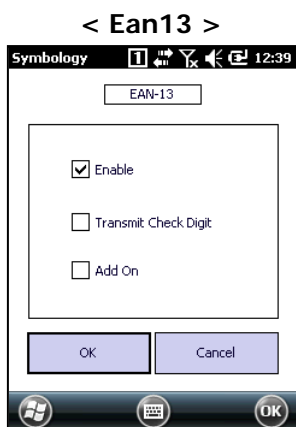
- **ENABLE:** Enable barcode decoding
- **Format :** Enable **Standard / Code32 / Trioptic**
- **Check Digit Verification:** Only decodes the barcode with check digit
- **Transmit Check Digit:** Check digit output option -> Transmit Check Digit into the Screen
- **Full ASCII Conversion:** Outputs the letters when letters are included in the data



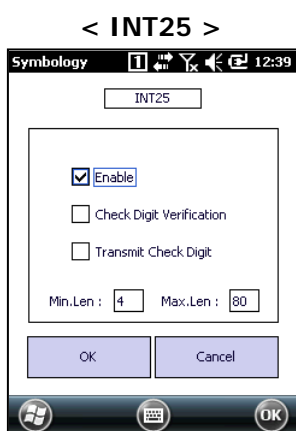
- **ENABLE:** Enable barcode decoding
- **Composite_UPC:** Enable **UPC** composite codes



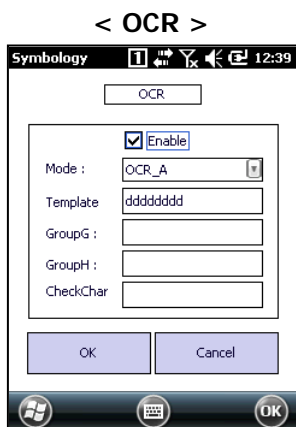
- **ENABLE:** Enable barcode decoding
- **Transmit Check Digit:** Check digit output option -> Transmit Check Digit into the Screen
- **Add On:** Option to read two consecutive barcodes when **UPC-A** types have neighboring additional barcodes



- **ENABLE:** Enable barcode decoding
- **Transmit Check Digit:** Check digit output option -> Transmit Check Digit into the Screen
- **Add On:** Option to read two consecutive barcodes when **UPC-A** types have neighboring additional barcodes



- **ENABLE:** Enable barcode decoding
- **Check Digit Verification:** Only decodes the barcode with check digit
- **Transmit Check Digit:** Check digit output option -> Transmit Check Digit into the Screen



- **ENABLE:** Enable barcode decoding
- **Mode**
 - **OCR_DISABLED:** Enable OCR_DISABLED Mode
 - **OCR_A:** Enable **OCR_A** Mode
 - **OCR_B:** Enable **OCR_B** Mode
 - **OCR_MONEY:** Enable **OCR_MONEY** Mode
 - **OCR_MICR_Unsupport:** Enable **OCR_MICR_Unsupport** Mode
- **Template:** A null-terminated string that indicates one or more template patterns for the **OCR** decode. All characters in the font are matched as is, except for the following
 - **a** – alphanumeric character
 - **c** – check character
 - **d** – a digit from 0-9
 - **e** – any character
 - **g** – any character specified in group G
 - **h** – any character specified in group H
 - **i** – alphabetic letter

APPLICATION MANUAL

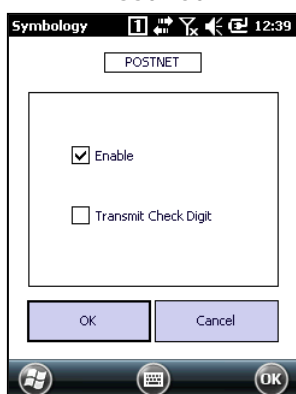


■ **r** – delimits a row

■ **t** – delimits multiple templates

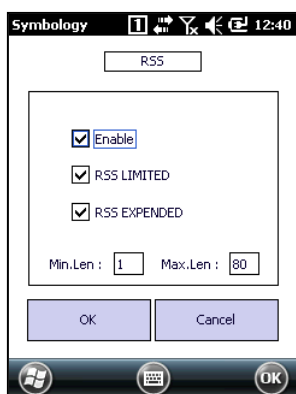
- **GroupG:** A null-terminated string that defines the set of characters matching group 'g' in a template
- **GroupH:** A null-terminated string that defines the set of characters matching group 'h' in a template
- **CheckChar:** A null-terminated string that defines the legal characters for checksum computation in a decoded message, use the string constant '0123456789' for modulo 10 checksums, and the string constant '0123456789ABCDEFGHIJKLMNOPQRSTUVWXYZ' for modulo 36 checksums

< PostNet >

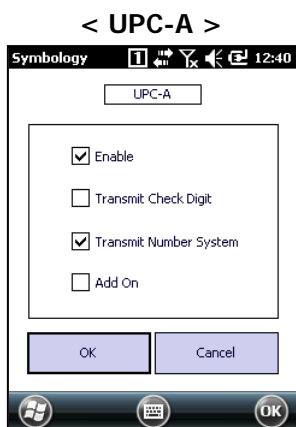


- **ENABLE:** Enable barcode decoding
- **Transmit Check Digit:** Check digit output option -> Transmit Check Digit into the Screen

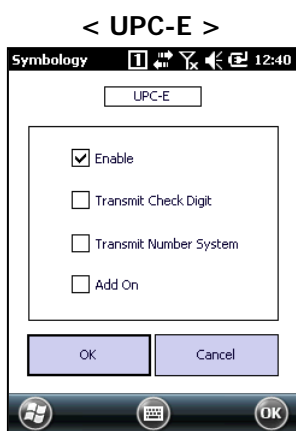
< RSS >



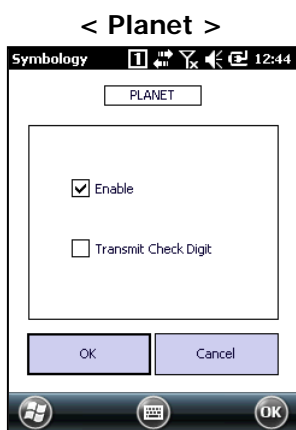
- **ENABLE:** Enable barcode decoding
- **RSS Limited:** Enable **RSS Limited** barcode decoding
- **RSS Expended:** Enable **RSS Expended** barcode decoding



- **ENABLE:** Enable barcode decoding
- **Transmit Check Digit:** Check digit output option -> Transmit Check Digit into the Screen
- **Transmit Number System:** Front most number output option
- **Add On:** Option to read two consecutive barcodes when **UPC-A** types have neighboring additional barcodes

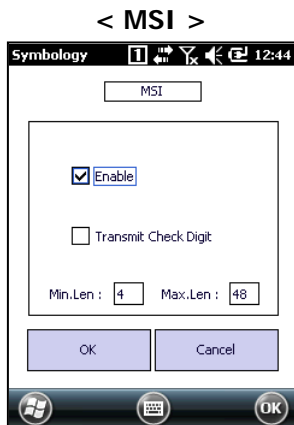


- **ENABLE:** Enable barcode decoding
- **Transmit Check Digit:** Check digit output option -> Transmit Check Digit into the Screen
- **Transmit Number System:** Front most number output option
- **Add On:** Option to read two consecutive barcodes when **UPC-A** types have neighboring additional barcodes

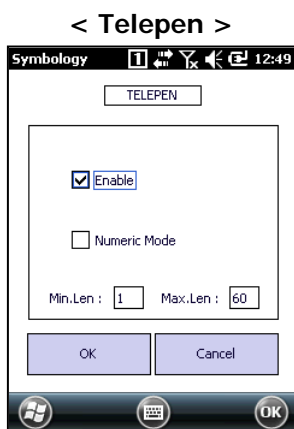


- **ENABLE:** Enable barcode decoding
- **Transmit Check Digit:** Check digit output option -> Transmit Check Digit into the Screen

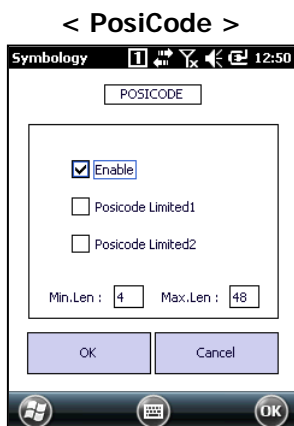
APPLICATION MANUAL



- **ENABLE:** Enable barcode decoding
- **Transmit Check Digit:** Check digit output option -> Transmit Check Digit into the Screen



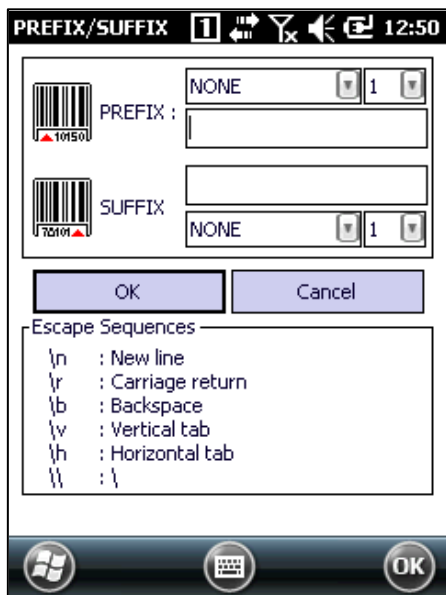
- **ENABLE:** Enable barcode decoding
- **Numeric Mode:** Enable **Numeric Mode** barcode decoding. Numeric Mode converts character set to Numeric set by Numeric Mode rule



- **ENABLE:** Enable barcode decoding
- **PosiCode Limited1:** Enable **PosiCode Limited1** barcode decoding
- **PosiCode Limited2:** Enable **PosiCode Limited2** barcode decoding

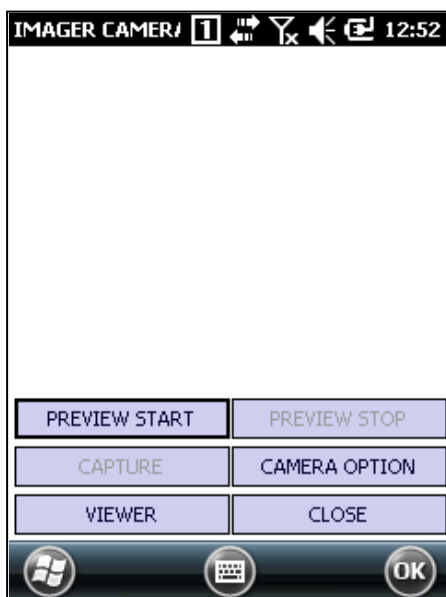
APPLICATION MANUAL

5. Prefix / Suffix



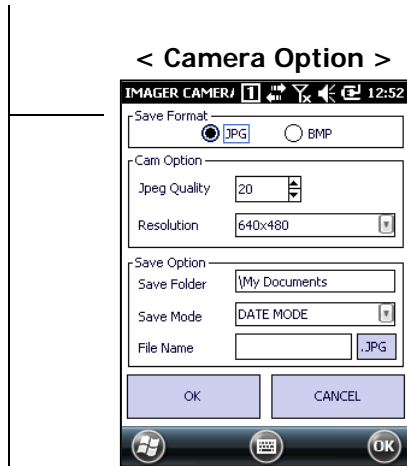
- **Prefix:** Enter data or command at the front of barcode data Shows versions of
 - **Virtual Key / Ctrl + A~Z**
 - **Count**
- **Suffix:** Enter data or command at the end of barcode data
 - **Virtual Key / Ctrl + A~Z**
 - **Count**
- Cannot enter commands if clipboard output is used

6. Imgaer Camera

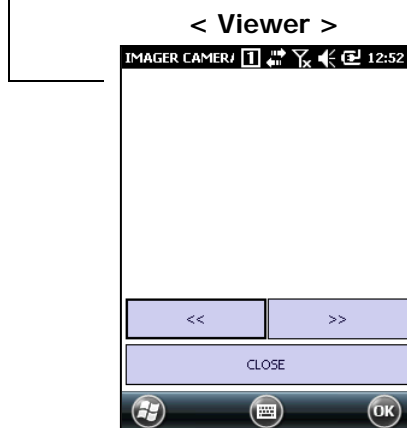


- **Preview Start:** Starts the Preview
- **Preview Stop:** Stops the Preview
- **Capture:** Saves picture after capturing
- **Camera Option:** Move to Option Page
- **Viewer:** Shows saved picture
- **Option:** Move to Option Page
- **Close:** Close the Imgaer Camera

APPLICATION MANUAL



- **Save Format:** Select the save format(Jpg/Bmp)
- **Can Option**
 - **Jpeg Quality:** Set Jpeg Quality
 - **Resolution:** Select the resolution of imager
- **Save Option**
 - **Save Folder:** Set the save path
 - **Save Mode**
 - ◆ **Date Mode:** Auto name format
 - ◆ **Custom With Num Name:** Set the name if the Name Type is Custom Mode
 - ◆ **Custom Mode:** User-defined name format
- **File Name:** Set the save File Name



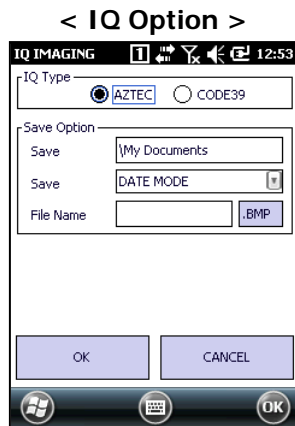
- **Image Viewer**
- **<<:** Display previous Image camera picture
- **>>:** Display next Image camera picture
- **CLOSE:** Close viewer

7.IQ Imager



- **IQ Start:** Starts the IQ Imager
- **IQ Stop:** Stops the IQ Imager
- **IQ Option:** Move to IQ Option Page
- **Close:** Close the IQ Imager

APPLICATION MANUAL

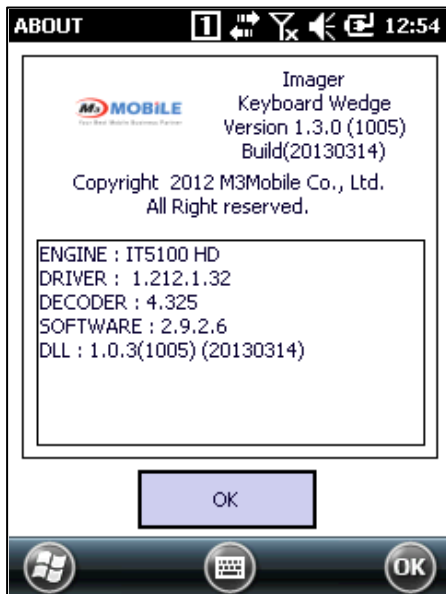


- **IQ Type:** Select the save IQ Type(AZTEC/CODE39)
- **Save Option**
 - **Save(1st):** Set storage position
 - **Save(2nd):** Set name type
 - **File Name:** Set the name if the Name Type is Custom Mode
- **OK:** Set the Option
- **Cancel:** Cancel the Option

APPLICATION MANUAL

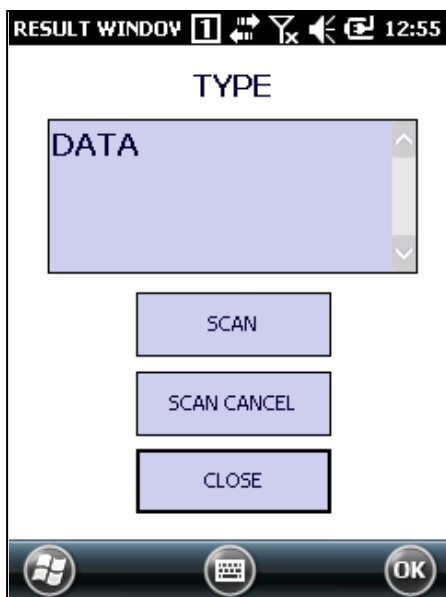


8. About



- Shows versions of those listed below.
 - ENGINE: Displays imager engine type
 - DRIVER: Display Imager driver version
 - DECODER: Displays Imager decoder version
 - SOFTWARE: Display Imager software version
 - DLL: Display Imager dynamic linking library version

9. Result Window



- **BarCode Type and data is displayed**
- **Scan:** Start scanning
- **Scan Cancel:** Stop scanning
- **Close:** Close the Display
- **TYPE:** Display symbology type of barcode after scanning
- **DATA:** Display data of barcode after scanning

APPLICATION MANUAL

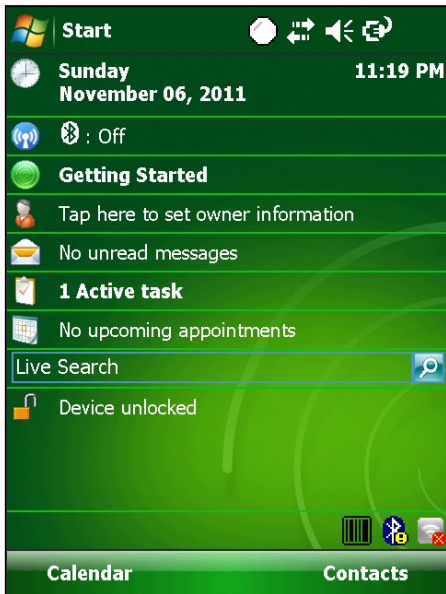


CHAPTER 4. LONG -RANGE SCANNER

/Product	Model	Type	OS	Note
MM3	MC-8000S	H/W Decoder	WM 6.1	Long-Range 2D Scanner

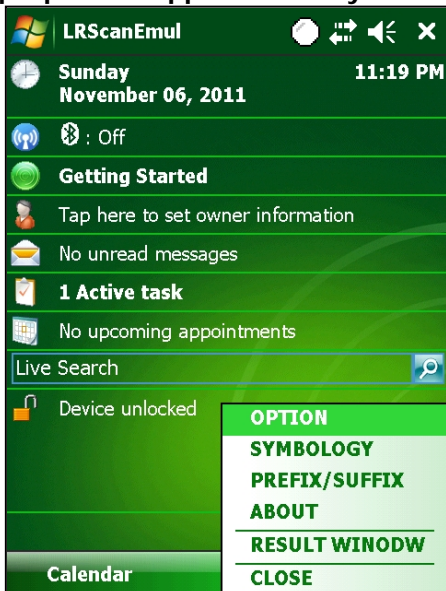
4.1 LRScanEmul.exe

1. First view of the program



- **ScanEmul** is properly launched if you can see **ScanEmul** tray icon at the bottom.

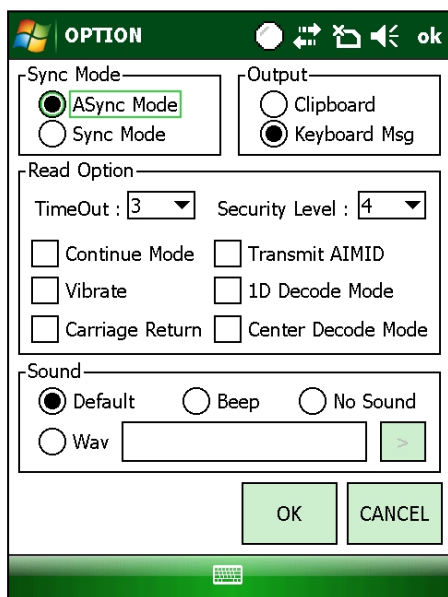
2. Pop-up menu appears when you click the icon



- **Option:** Configures general Emulator options.
- **Symbology:** Configures options Regarding Symbology Option
- **Prefix / Suffix:** Enter data or command at the front or end of barcode data
- **About:** Information of **ScanEmul**
- **Result Window:** Tests reading of barcodes.
- **Close:** Close the program

APPLICATION MANUAL

3. Option



● SyncMode

- **ASync:** Emits beam while the scan button is pressed. Limited by the TimeOut
- **Sync:** Emits beam for TimeOut period

● Output

- **Clipboard:** Display outputs on clipboard
- **keyboard Msg:** Outputs the result as keyboard type -> Outputs the result which is displays one by one as keyboard type

● Reading Option

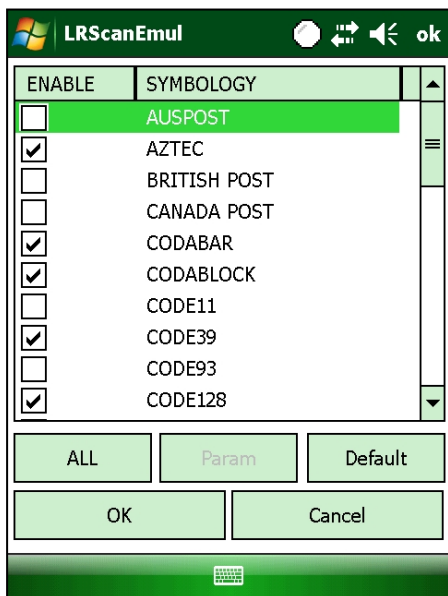
- **Time Out:** Beam emitting duration
- **Security Level:** Determines how many successful read output the result.
Ex) '2' means it needs to successfully read the barcode twice to output the result
- **Continue Mode:** Emits beam constantly even after reading
- **Vibrate:** Vibrate after a successful scan. Only valid for terminals with phone module
- **Carriage Return:** Send **VK_RETURN** message after read -> Send **VK_RETURN** message which indicates 'Enter key' after scanning
- **Transmit AIMID:** Output AIM ID of the barcode
- **Center Decoder Mode:** When the Center Decoding option is enabled, the scanner will only decode barcodes if the laser beam/aiming dot is directly on the barcode.

● Sound

- **Default:** default sound after a successful scan
- **Beep:** Beeps after a successful scan
- **No Sound:** No sound after a successful scan
- **Wav:** User defined wav sound

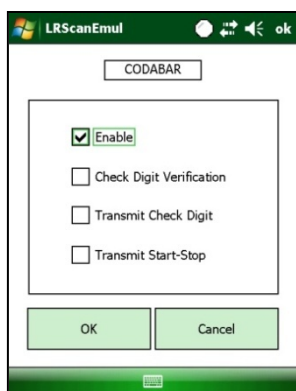
APPLICATION MANUAL

4. Symbology



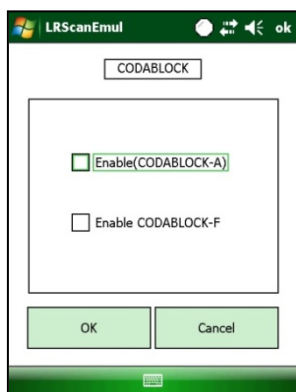
- Advanced configuration for each barcode
- Enable or disable 14 different types of barcode
- Enter advanced settings for each barcode type by click on them

< CODABAR >



- **ENABLE:** Enable barcode decoding
- **Check Digit Verification:** Only decodes the barcode with check digit
- **Transmit Check Digit:** Check digit output option
- **Transmit Start-Stop:** Outputs start-stop bit of **Codabar** type barcodes

< CODABLOCK >



- **ENABLE(CODABLOCK-A):** Enable barcode decoding
- **ENABLE CODABLOCK-F:** Enable **CODABLOCK-F** barcode decoding

APPLICATION MANUAL



< Code11 >

- **ENABLE:** Enable barcode decoding
- **Transmit Check Digit:** Check digit output option
- **Check Digit Verification:** Only decodes the barcode with check digit
 - **1 Check Digit:** Only decodes the barcode with one check digit
 - **2 Check Digit:** Only decodes the barcode with two check digits

< Code39 >

- **ENABLE:** Enable barcode decoding
- **Check Digit Verification:** Only decodes the barcode with check digit
- **Transmit Check Digit:** Check digit output option
- **Full ASCII Conversion:** Outputs the letters when letters are included in the data

< Code128 >

- **ENABLE:** Enable barcode decoding
- **ENABLE GS1-128:** Enable **GS1-128** barcode decoding
- **ENABLE ISBT 128:** Enable **ISBT 128** barcode decoding

APPLICATION MANUAL



< UPC-A >

- **ENABLE:** Enable barcode decoding
- **Transmit Number System:** Front most number output option
- **Transmit Check Digit:** Check digit output option
- **Convert UPC-A as EAN-13:** Converts **UPC-A** to **EAN13** by adding '0' at the front
- **Add On 2/5:** Option to read two consecutive barcodes when **UPC-A** types have neighboring additional barcodes (2 and 5 spaces)

< EAN-8 >

- **ENABLE:** Enable barcode decoding
- **Transmit Check Digit:** Check digit output option
- **Convert EAN-8 as EAN-13:** Convert to **EAN-13** by adding five zeros at the front of the data

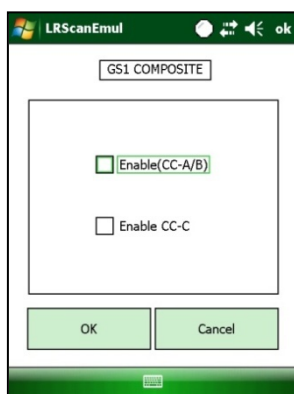
< EAN-13 >

- **ENABLE:** Enable barcode decoding
- **ENABLE ISxN:** Enable **ISxN** barcode decoding
- **Transmit Check Digit:** Check digit output option
- **Add On 2/5:** Option to read two consecutive barcodes when **UPC-A** types have neighboring additional barcodes (2 and 5 spaces)

APPLICATION MANUAL

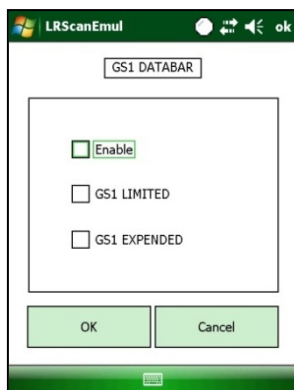


< GS1 COMPOSITE >



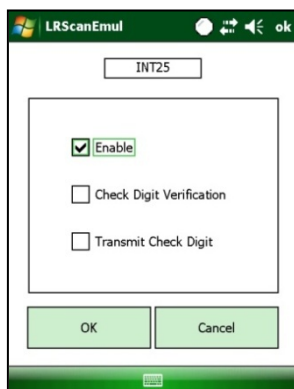
- **ENABLE(CC-A/B):** Enable barcode decoding
- **ENABLE CC-C:** Enable **CC-C** barcode decoding

< GS1 DATABAR >



- **ENABLE:** Enable barcode decoding
- **ENABLE GS1 LIMITED:** Enable **GS1 LIMITED** barcode decoding
- **ENABLE GS1 EXPENDED:** Enable **GS1 EXPENDED** barcode decoding

< INT25 >

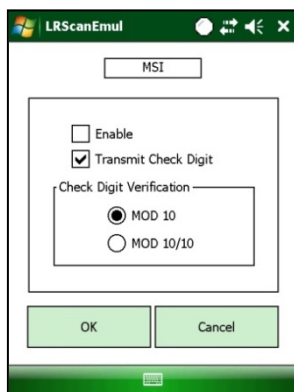


- **ENABLE:** Enable barcode decoding
- **Check Digit Verification:** Only decodes the barcode with check digit
- **Transmit Check Digit:** Check digit output option

APPLICATION MANUAL

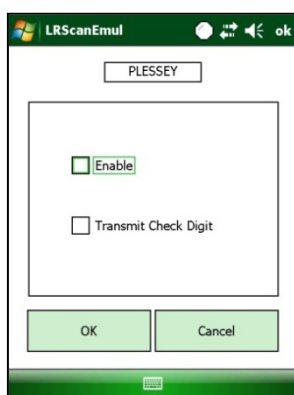


< MSI >



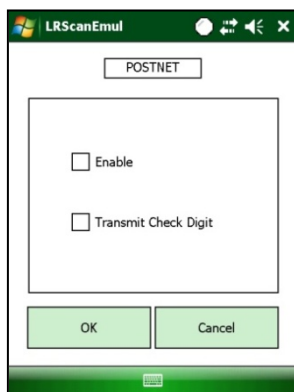
- **ENABLE:** Enable barcode decoding
- **Transmit Check Digit:** Check digit output option
- **Check Digit Verification**
 - **MOD 10:** A check digit is **MOD 10**
 - **MOD 10/10:** Both check digits are **MOD 10**

< PLESSEY >



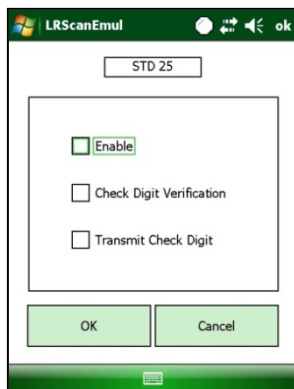
- **ENABLE:** Enable barcode decoding
- **Transmit Check Digit:** Check digit output option

< POSTNET >



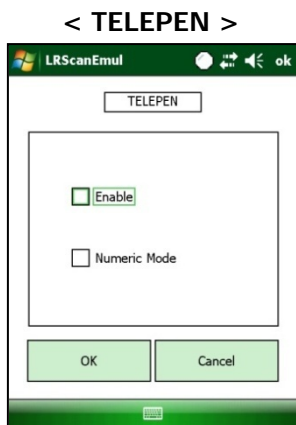
- **ENABLE:** Enable barcode decoding
- **Transmit Check Digit:** Check digit output option

< STD 25 >



- **ENABLE:** Enable barcode decoding
- **Check Digit Verification:** Only decodes the barcode with check digit
- **Transmit Check Digit:** Check digit output option

APPLICATION MANUAL

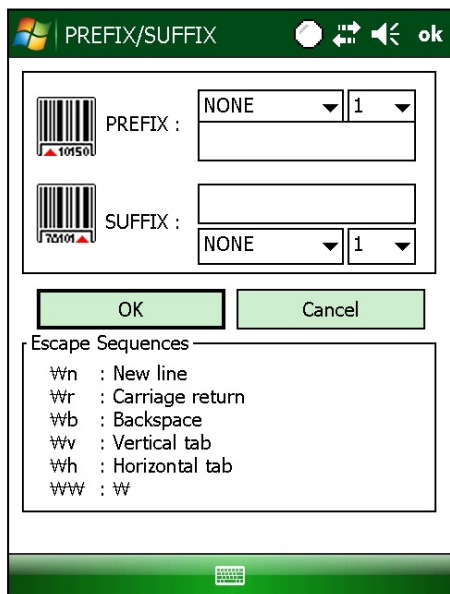


- **ENABLE:** Enable barcode decoding
- **Numeric Mode:** Enable **Numeric Mode** barcode decoding. Numeric Mode converts character set to Numeric set by Numeric Mode rule.

APPLICATION MANUAL

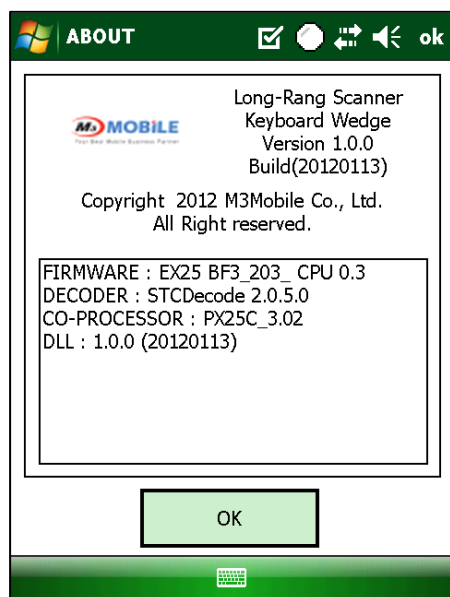


5. Prefix / Suffix



- **Prefix:** Enter data or command at the front of barcode data Shows versions of
 - **Virtual Key / Ctrl + A~Z**
 - **Count**
- **Suffix:** Enter data or command at the end of barcode data
 - **Virtual Key / Ctrl + A~Z**
 - **Count**
- Cannot enter commands if clipboard output is used

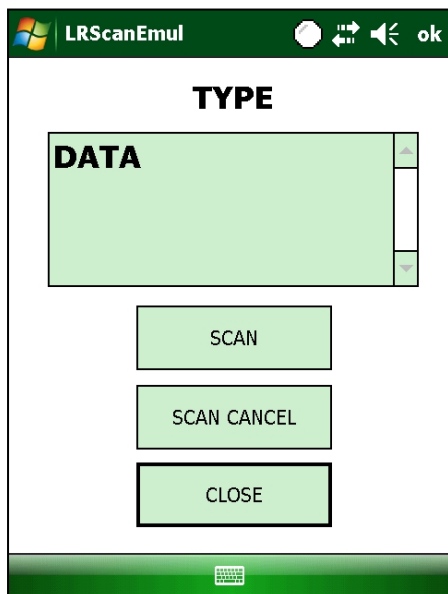
6. About



- **Shows versions of those listed below.**
 - **FIRMWARE:** Displays scanner LRScanner FirmWare information
 - **DECODER:** Displays scanner decoder version
 - **CO-PROCESSOR:** Displays LRScanner CO-PROCESSOR
 - **DLL:** Display LRScanner dynamic linking library version

APPLICATION MANUAL

7. Result Window



- **Bar Code Type and data is displayed**
- **Scan:** Start scanning
- **Scan Cancel:** Stop scanning
- **Close:** Close the Display
- **TYPE:** Display symbology type of barcode after scanning
- **DATA:** Display data of barcode after scanning

APPLICATION MANUAL

CHAPTER 5 Camera(CE)



APPLICATION MANUAL

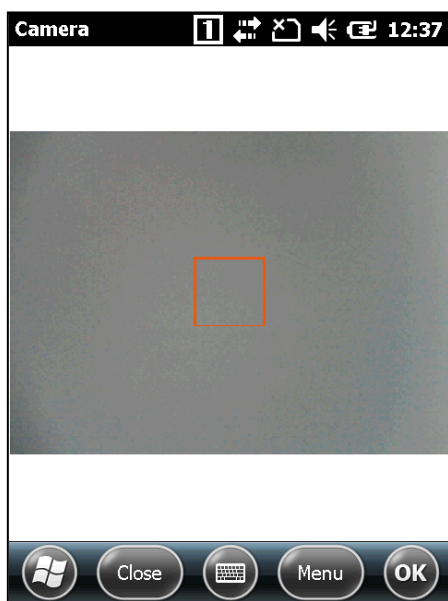


CHAPTER 5. CAMERA(WM)

Product	Model	Type	OS	Note
M3 SKY	MC-7X00S	2.0 M FF	WM 6.1/6.5	
M3 ORANGE	M3 OREANGE	3.0 M AF	WM 6.5	
MM3	MC-8000S	2.0 M FF	WM 6.1	
M3 SMART	M3 SMART	3.2 M AF	WM 6.1	
M3 ORANGEPLUS	M3 OREANGEPLUS	3.0 M AF	WM 6.5	

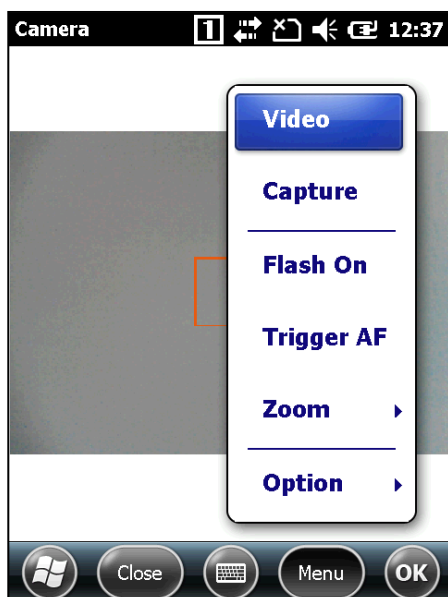
5.1 Camera.exe

1. Main Screen



- **Menu:** When clicking Menu button, Main PopUp menu is displayed
- **Close:** When clicking Close button, Camera application is closed

2. Menu

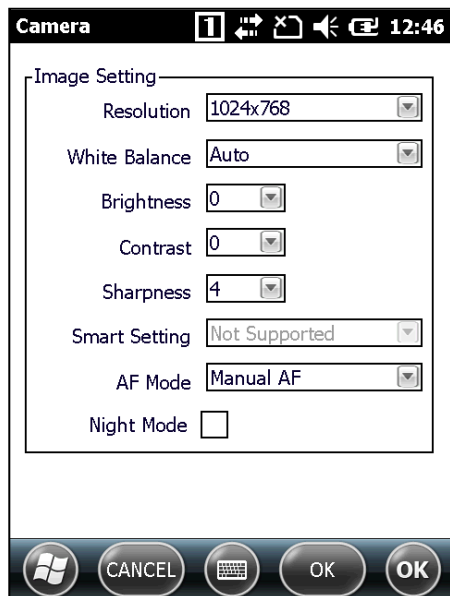


- **Video:** Enters video mode. In video mode, the menu item will change to Still
- **Capture:** Captures the preview image and automatically saves it in \ My Documents \ My Pictures (default folder)
- **Flash On / Off:** Turns on or off the flash when capturing a picture
- **Trigger AF:** Auto focusing function
- **Zoom:** Zoom to enlarge the image
- **Option:** Enters option Page. Option button is disabled when the preview is on

APPLICATION MANUAL

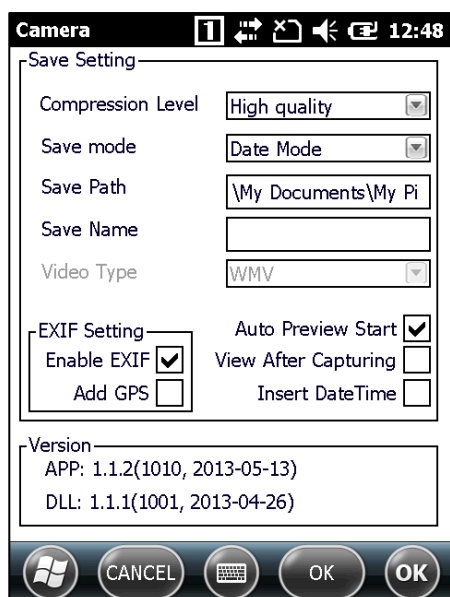


3. Image Option Screen



- **Resolution:** Settings for image size
- **Brightness / White Balance / Contrast / Sharpness / Night mode / Smart Setting:**
General settings for imaging (Night mode cannot be supported in maximum resolution. M3 SKY and MM3 do not support Contrast, Sharpness, and Smart Setting).
- **AF type**
 - **Manual AF:** Manually setting for **AF** function
 - **Always AF:** Automatically setting for **AF** function before shooting
 - **Auto AF:** Running **AF** function when the subject is moved in preview image or the environment is changed

4. Save Option Screen



- **Compression Level:** Setting for image quality
- **Save mode:** Date mode names the taken picture according to the system date and Custom mode names the taken picture as user-defined
- **Save Path / Save Name:** Only activated in Custom Mode
- **Video Type:** Defines and supports the video file type-**WMV/AFS**, activated in Video mode only
- **Auto Preview Start:** After photo shoot execute preview automatically, when disabled screen need to be touched to turn preview on.
- **View After Capturing:** Defines whether to start the Preview right after shooting
- **Version:** Camera program version and **DLL** version can be identified
- **Insert EXIF Data:** Sets up whether the **EXIF**(exchangeable image file format) information is added when capturing JPG picture
- **Add GPS Data Into EXIF:** Sets up whether the GPS information is included in **EXIF** information (applied for GPS supported device only)
- **Insert DateTime:** Add time and date information on Image.

APPLICATION MANUAL



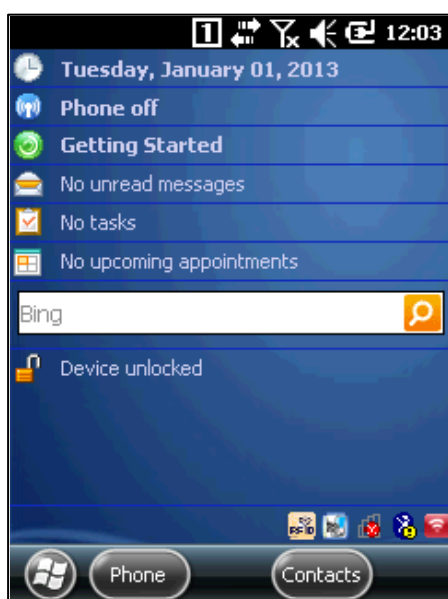
CHAPTER 6. RFID

Product	Model	Type	OS	Note
M3 SKY	MC-7X10S	HF/LF	WM 6.1/6.5	
M3 ORANGE	M3 ORANGE	HF	WM 6.5	
M3 ORANGEPLUS	M3 ORANGEPLUS	HF	WM 6.5	

6.1 RFIDEmul.exe

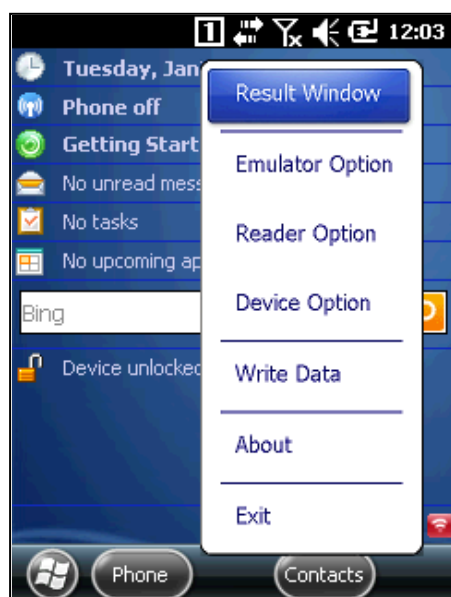
RFIDEmul allows the user to read RFID tags in any programs installed the device

1. First view of the program



- **RFIDEmul** is properly launched if you can see RFID tray icon at the bottom

2. Pop-up menu appears when you click the icon

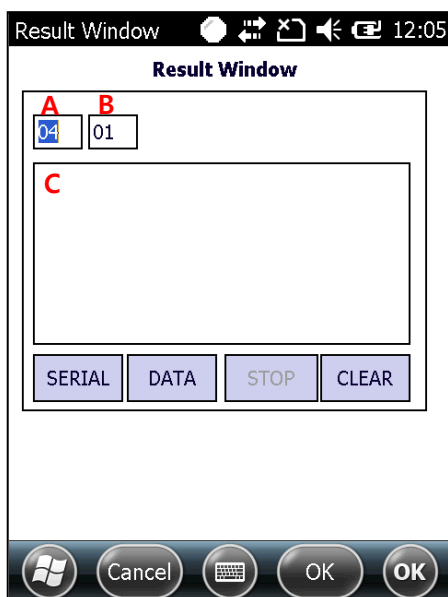


- **Emulator Option:** Configures general Emulator options
- **Reader Option:** Configures options regarding RFID Reader
- **Device Option:** Configures options regarding device
- **About:** Information of RFID.
- **Write Data:** Writes data to the tag
- **Result Window:** Tests reading and writing of tags
- **Exit:** Exits the program

APPLICATION MANUAL

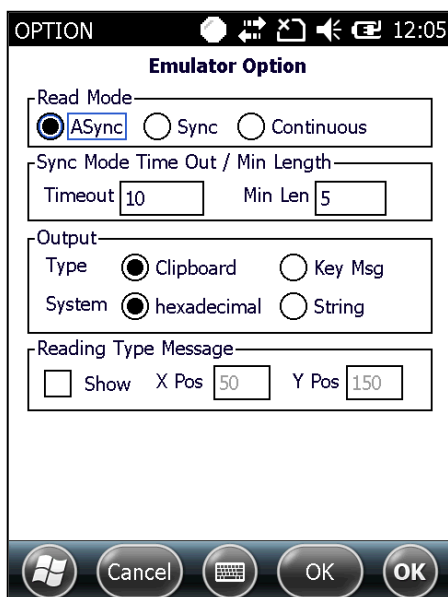


3. Result Window



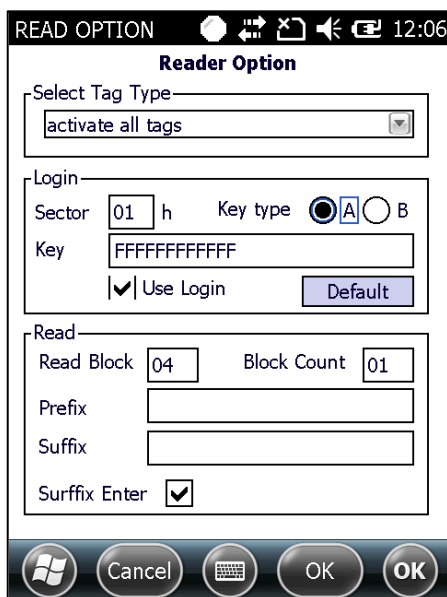
- **Box A:** Start Block - Select the block of tag to write the data
- **Box B:** Inputs block number to read and write data from Block Count and Start Block (not supported LF RFID)
- **Box C:** Output the result of read
- **SERIAL button:** Performs reading of Serial Number
- **DATA button:** Performs reading of Block Data in Memories
- **STOP button:** Stops reading if Read mode is Continuous mode
- **CLEAR button:** Deletes the result

4. Emulator Option



- **Read Mode**
 - **ASync:** Reads tags if any exists within antenna field otherwise terminates
 - **Sync:** Wait until it finds tags within antenna field (10 sec)
 - **Continuous:** Continuously reads tags
- **Sync Mode Time Out / Min Length**
 - **Timeout:** Waiting time when reading in sync mode
 - **Min Len:** Sets the minimum length of the read result
- **Output**
 - **Clipboard:** Copies and pastes the data to Clipboard
 - **Keyboard Msg:** Outputs the result as keyboard type. -> Outputs the result which is displays one by one as keyboard type.
 - **Hexadecimal:** Prints the tag data in 16 antilogarithm
 - **String:** Prints the tag data with string
- **Reading Type Message**
 - **Show:** Show the message
 - **XPos :** X-Coordinate
 - **YPos :** Y-Coordinate

5. Reader Option



- **Select Tag Type:** Select tag type that you wish to read

- **High Frequency Radio**

- ✓ ISO 14443 Type A
- ✓ ISO 14443 Type B
- ✓ ICODE UID
- ✓ ICODE EPC
- ✓ ICODE
- ✓ SR176
- ✓ activate all tags
- ✓ ISO 15693
- ✓ ISO 15693 TAGIT

- **Low Frequency Radio**

- ✓ All TAG types
- ✓ EM4X02
- ✓ EM4X05(ISO FXDB)
- ✓ EM4X50
- ✓ HITAG1 / HITAG S
- ✓ HITAG2
- ✓ TI-RFID SYSTEMS

- **Login:** Used if tag needs to be logged-in

- **Sector:** Select the sector to login (not supported LF RFID)
- **Key type:** Select the Key type to login (not supported LF RFID)
- **Key:** Select the available key to login
- **Use Login:** Defines whether to use the **Mifare** tag
- **Default:** Back to the initial setting.

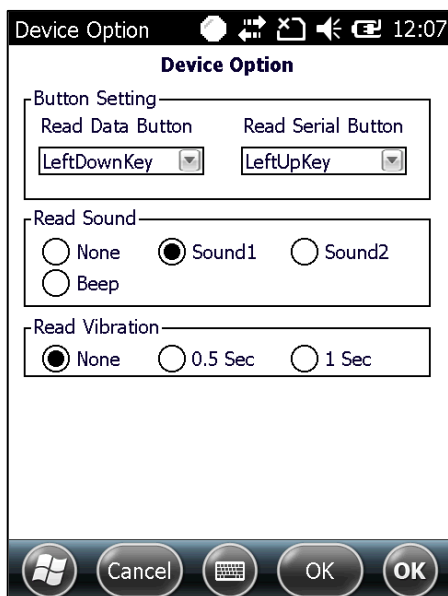
- **Read**

- **Read Block:** Select the block to read
- **Block Count:** Inputs block number to read from Read Block. (not supported LF)
- **Suffix Enter:** Defines whether to use Suffix Enter after the read data
- **Prefix:** Defines string to add before the read data
- **Suffix:** Defines string to add after the read data



'Activate all tags' is a default tag type. By changing tag type to other specific one, read/write speed can be faster.

6. Device Option



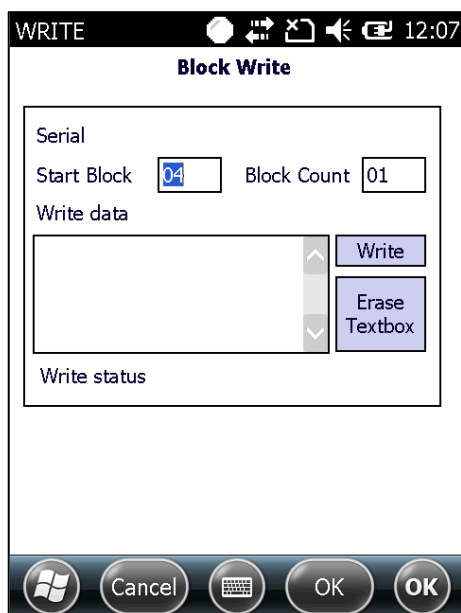
● Button Setting

- **Read Data Button:** Set shortcut button to read block data of the tag
- **Read Serial Button:** Set shortcut button to read serial data of the tag

● Read Sound: Sets sound

- **Read Vibration:** Sets vibration (can be used when there is phone module)

7. Write



- **Serial:** Outputs the serial number of tag to write the data
- **Start Block:** Select the block of tag to write the data
- **Block Count:** Inputs block number to write data from Start Block. (not supported LF RFID)
- **Erase Textbox button:** Deletes the inputted data in textbox
- **Write button:** Input the written data in textbox to Block
- **Write status:** Displays the write result

8. About



● Version

- RFID Type: Displays RFID type information.(ie. HF or LF)
- Firmware Version: Displays RFID Module's firmware version.
- CFReader DLL: Displays DLL version information.
- App Version: Displays RfidEmul version information.
- Tag Type: Displays Tag Type set for RFID.

APPLICATION MANUAL

6.2 Helpful Tips



■ How is the RFID Specification of M3 SKY?

RFID Module used in **MC7510/MC7710** is **HID Global RDHO-0201N0-03** (13.56MHz), its power output is 200mW without antenna, and around 0.7W RMS with antenna.

Below table is General Information of RFID.

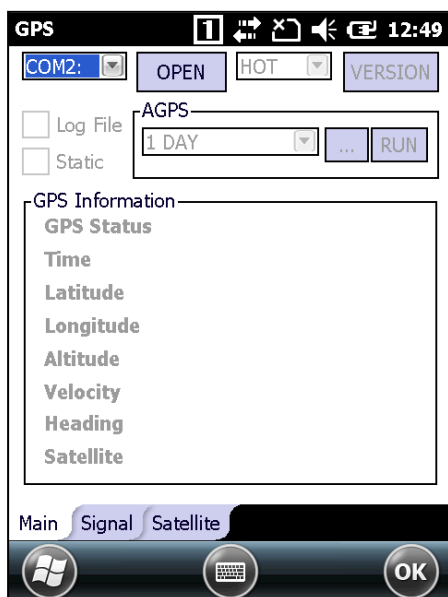
RFID TYPE	Frequency Band
LFID (Low Frequency Identification)	120 ~ 140 kHz
HFID (High Frequency Identification)	13.56 MHz
UHFID (Ultra High Frequency Identification)	868 ~ 956 MHz

CHAPTER 7. GPS

Product	Model	Type	OS	Note
ALL	ALL	SiRF Star III / UBLOX	ALL	AGPS is supported on UBLOX only.

7.1 GPSManager.exe

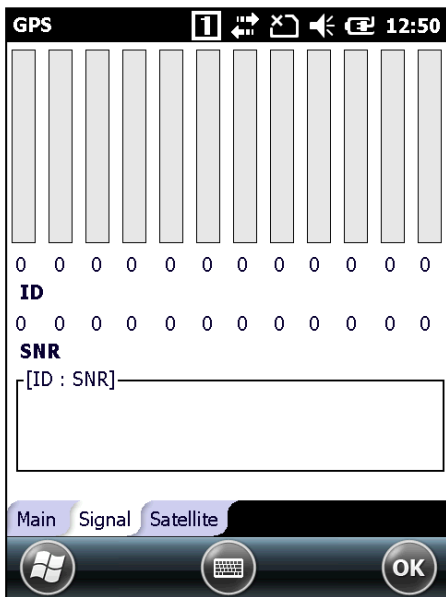
1. Main Page



- **COM Port Combo Box:** Port for GPS
- **OPEN/CLOSE Button:** Connect / Disconnect GPS
- **Start(Reset) Combo Box:** Set up GPS module hot reset / warm reset / cold reset
- **VERSION Button:** Displays Module information, DLL version and application version
- **Log File:** Makes log file
- **Static:** Performs in Static mode
- **AGPS**
 - **Day Combo Box:** Day of Almanac Data
 - **'...' Button:** Add Almanac file a Day combo box
 - **RUN Button:** Applies selected Almanac data to GPS Module
- **GPS Information**
 - **GPS Status**
 - **Time**
 - **Latitude**
 - **Longitude**
 - **Altitude**
 - **Velocity**
 - **Heading**
 - **Satellite**

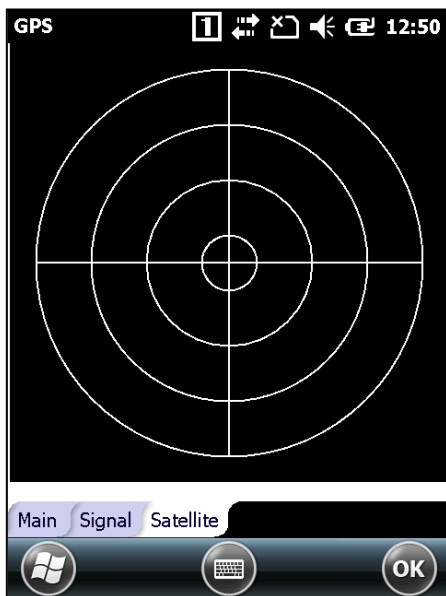
APPLICATION MANUAL

2. Signal Page



- Shows **ID** and **SNR** value that GPS module received from satellite

3. Satellite Page



- Shows location of satellite that GPS module received

7.2 Helpful Tips



■ **AGPS** function can only be used with device that **UBLOX** module is embedded

■ **GPS Start Mode**

- **Hot Start:** Start mode of the GPS receiver when current position, clock offset, approximate GPS time, and current ephemeris data are all available

- **Warm Start:** Start mode of the GPS receiver when current position, clock offset, and approximate GPS time are input by the user. Ephemeris data is not available

- **Cold Start:** A condition in which the GPS receiver can arrive at a navigation solution without initial position, time, and current Ephemeris

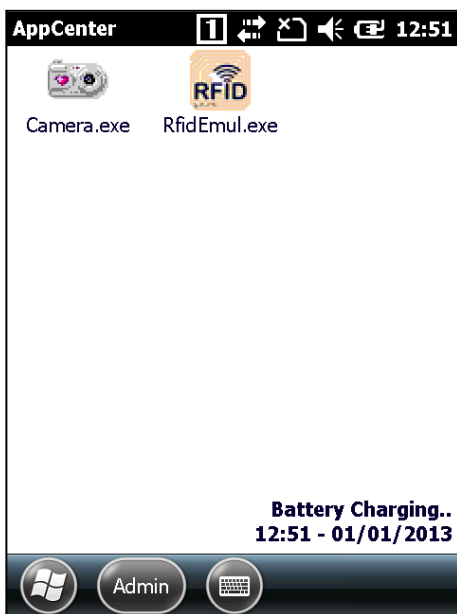
■ **Static Mode:** Reduces location error when the velocity is under the static threshold (a protection function that location value changes frequently because of interference and/or error when GPS signal reception)

CHAPTER 8. APPCENTER (WM)

Product	Model	Type	OS	Note
M3 SKY	MC-7X00S	Software	ALL	Kiosk Mode
M3 ORANGE	M3 OREANGE	Software	ALL	Kiosk Mode
MM3	MC-8000S	Software	ALL	Kiosk Mode
M3 ORANGEPLUS	M3 OREANGEPLUS	Software	ALL	Kiosk Mode

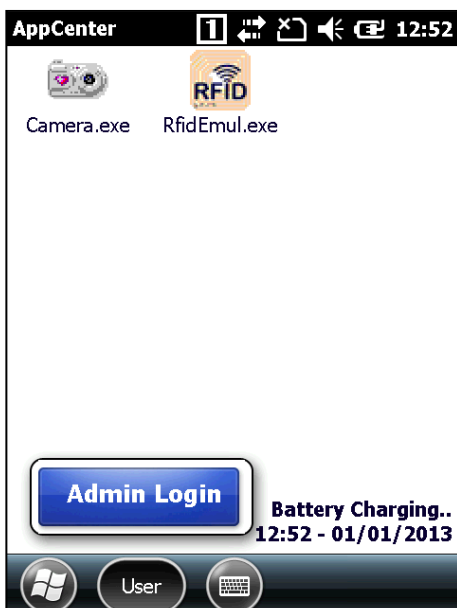
12.1 AppCenter.exe

1. First view of the program



2. Admin Login

- Can activate 'Admin Login' by clicking 'User'



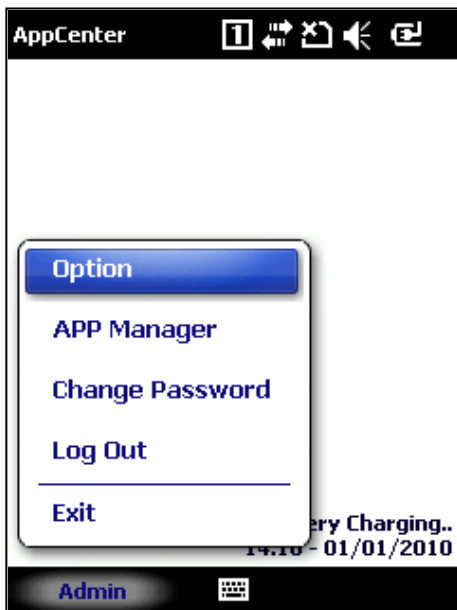
APPLICATION MANUAL

3. Admin Login



- **Enter Password:** Password (**Default: mobile**)

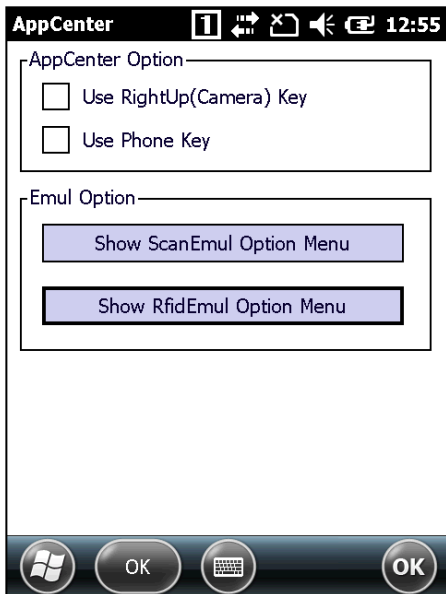
4. Admin account status



- **Option:** Set key setting, **ScanEmul** and **RfidEmul** options
- **APP Manager:** Select applications you want to register to **AppCenter**
- **Change Password:** Change admin account password.
- **Log Out:** Log out from admin account
- **Exit:** Exit from **AppCenter**

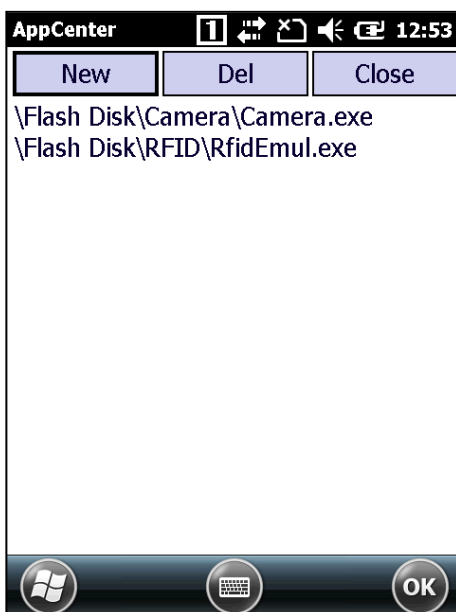
APPLICATION MANUAL

5. Option



- Sets RightUp(Camera) Key to be used in AppCenter
- Sets Phone Key to be used in AppCenter
- Sets **ScanEmul** options
 - Enable ScanEmul button when ScanEmul is running.
- Sets **RfidEmul** options
 - Enable RfidEmul button when RfidEmul is running.

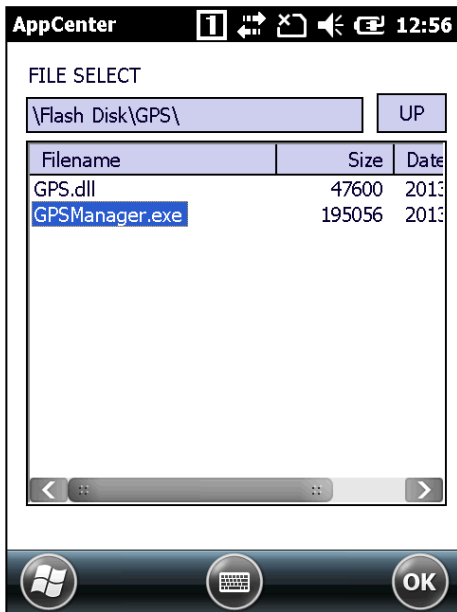
6. APP Manager



- **New Button:** Selects applications you want to register to AppCenter
- **Del Button:** Removes registered applications
- **Close button:** Closes registering applications

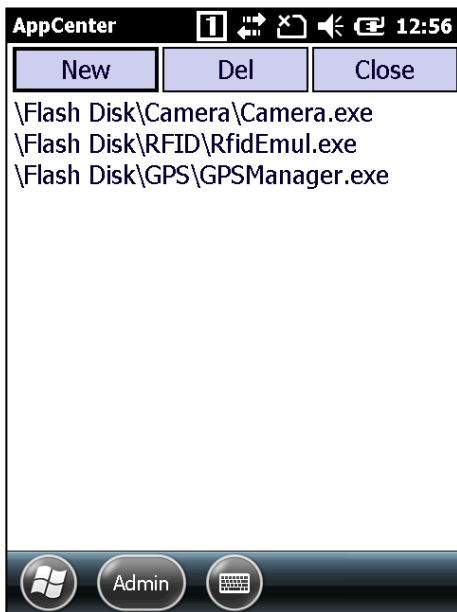
APPLICATION MANUAL

7. APP Manager → New



- **FILE SELECT:** Select executable file that you wish to register

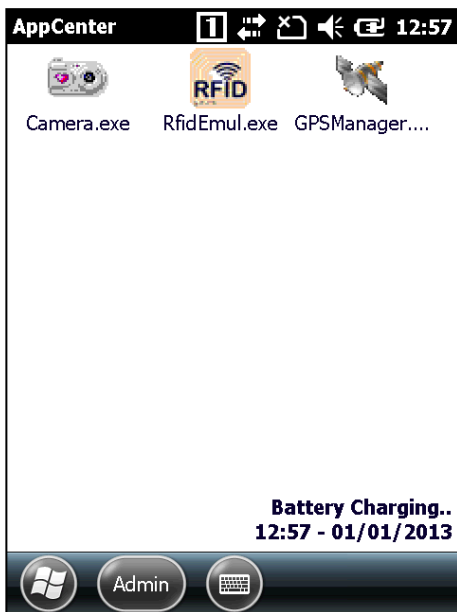
8. APP Manager Added



- **AppCenter** displays the path of the file once you have chosen the file

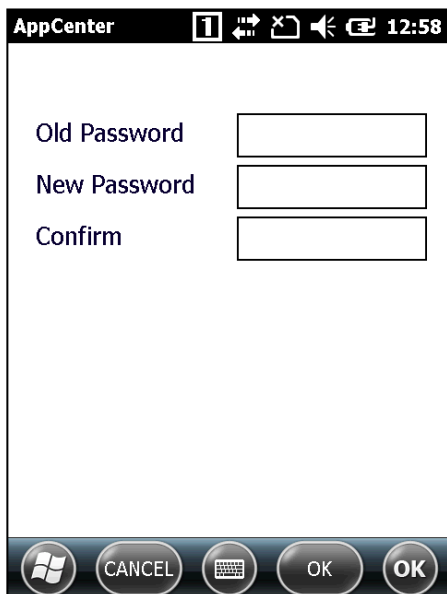
APPLICATION MANUAL

9. Application registered in AppCenter



- Registered application can be launched by clicking the icon

10. Change Password



- Changing password dialog
 - Old Password : Enter current password
 - New Password : Enter new changing password
 - Confirm Password : Enter changing password to confirm password
 - OK : Change password
 - CANCEL : Cancel menu changing password

APPLICATION MANUAL



Services

If you experience any trouble while using our product, you can visit **M3 Service center** or send enquires to our **online support web page** (<http://itc.m3mobile.net>), we will do our best to solve your trouble as soon as we can.

M3 FAQ document can help you with troubleshooting.

For any enquires about business program, please contact program provider for faster service.

Contact details

Headquarter / Service Center

M3 Bldg., 735-45, Yeoksam-Dong, Gangnam-Gu, Seoul, 135-080, Korea

Tel: +82 2 574 0037 Fax: +82 2 558 1253

www.m3mobile.net, sales@m3mobile.co.kr

Factory

Chun-ui Techno Park 201-610, 202, Chunui-Dong, WonMi-Gu, Buchoen, Gyeonggi-Do, 420-857, Korea

Tel: +82 32 623 0030, Fax: +82 32 623 0035

Online Support Web page

<http://itc.m3mobile.net>

